

Bowing Squall Line Across Bi-State Region

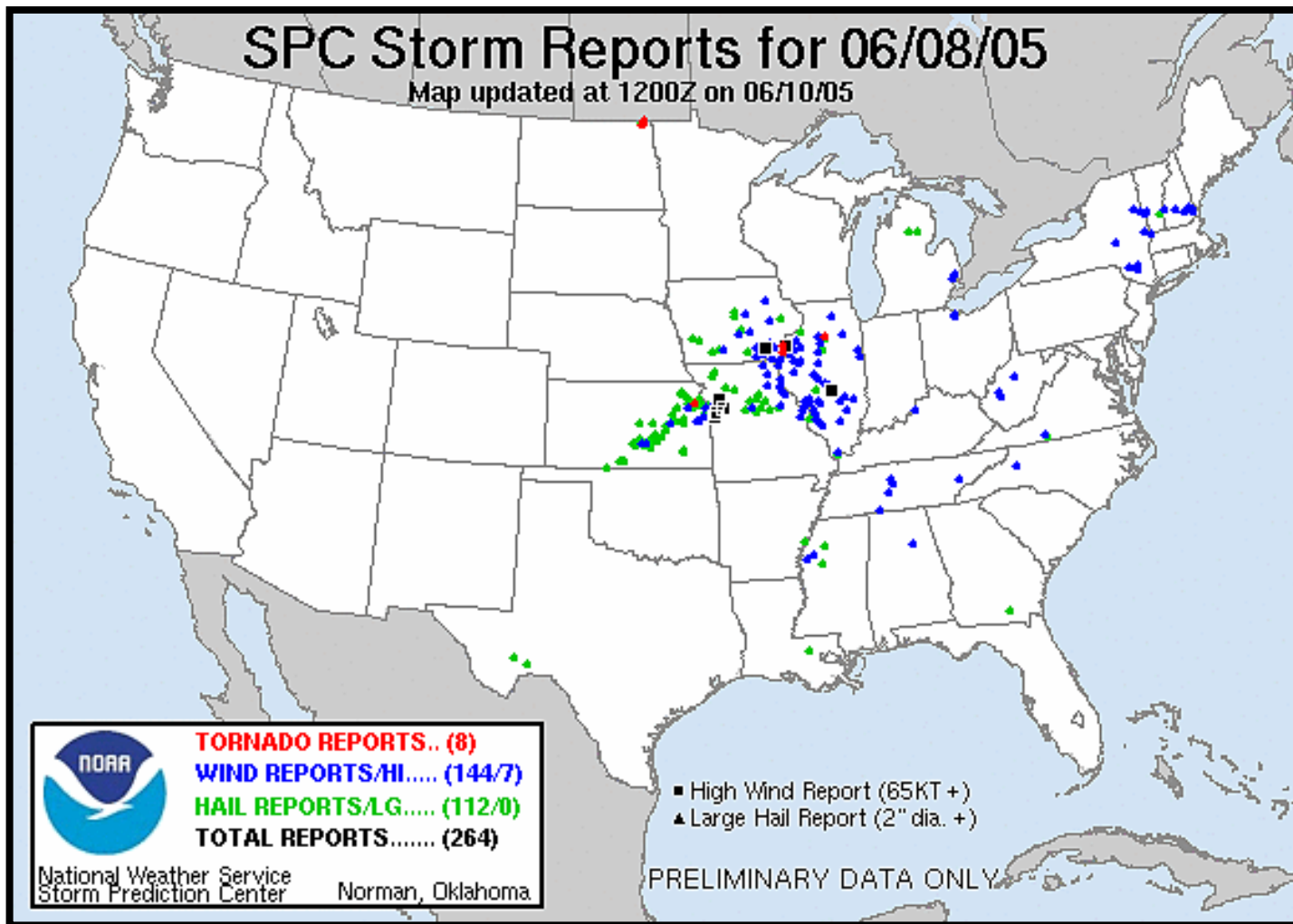
June 8th, 2005

Overview

A line of strong to severe thunderstorms raced across portions of eastern Missouri and western Illinois the afternoon and evening of June 8th, 2005, producing damaging winds and large hail.

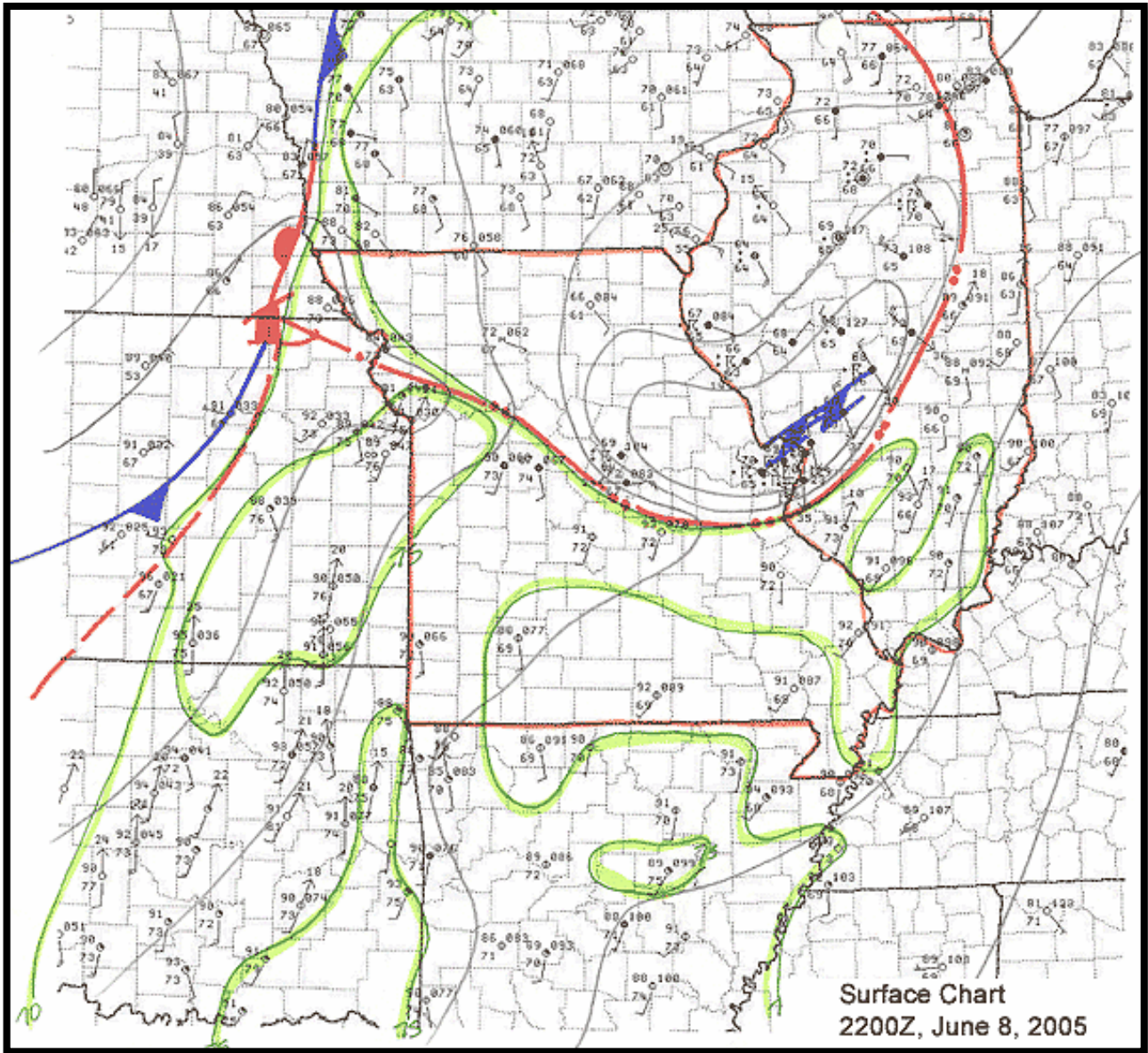
The thunderstorms began developing during the morning hours in northwest Missouri along the southern edge of an outflow boundary associated with a nocturnal thunderstorm complex over Iowa. With the atmosphere ahead of the boundary very warm and unstable, the thunderstorms intensified from southeast Iowa through northern Missouri during the early afternoon hours as the boundary encountered the unstable air.

The thunderstorms eventually developed into a large bowing squall line over northeast Missouri and western Illinois and moved southeast through the bi-state region into the early evening hours. Damaging winds of 60 to 65 mph accompanying portions of the squall line resulted in numerous downed tree limbs and trees.



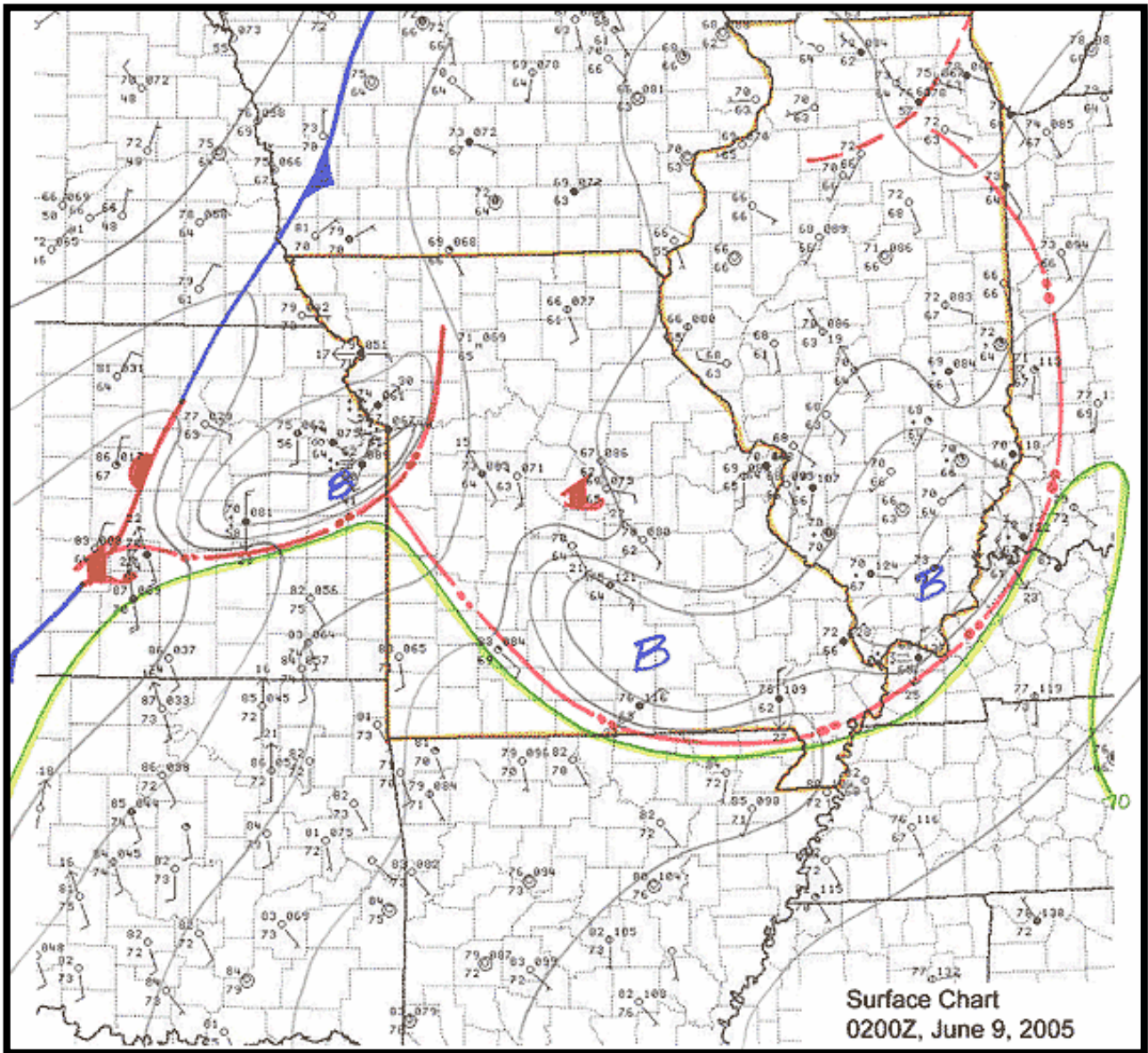
Storm Reports from 08 June 2005 courtesy of the Storm Prediction Center.

Surface Analysis



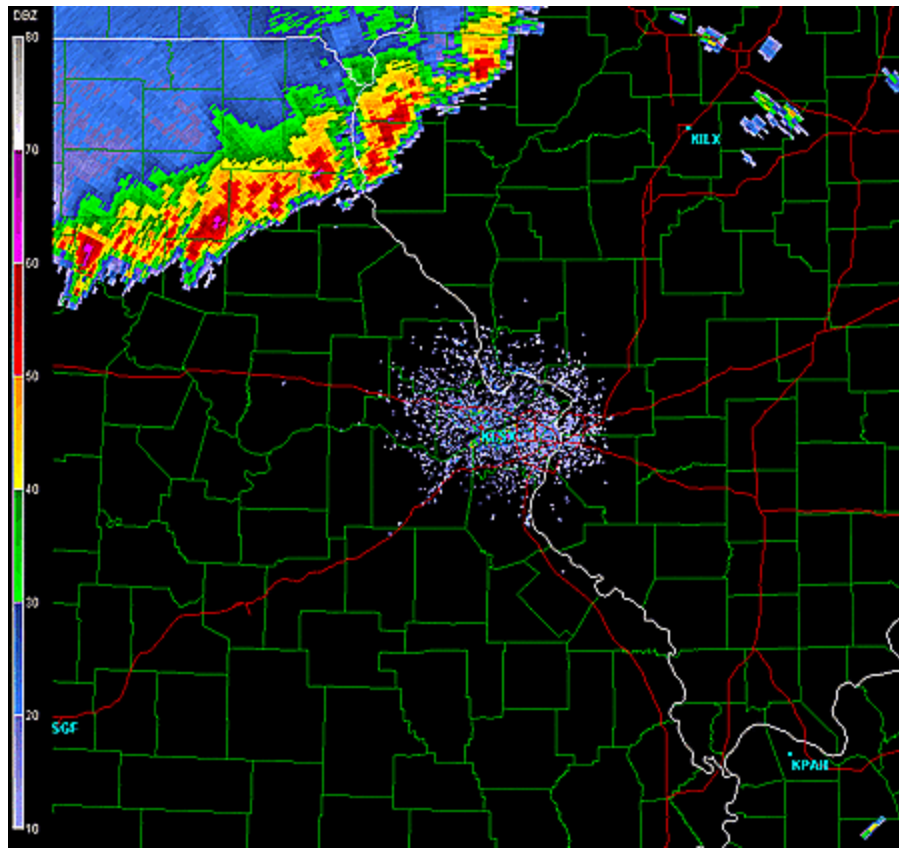
June 8th, 2005 Surface Map - 5 pm

Surface Analysis



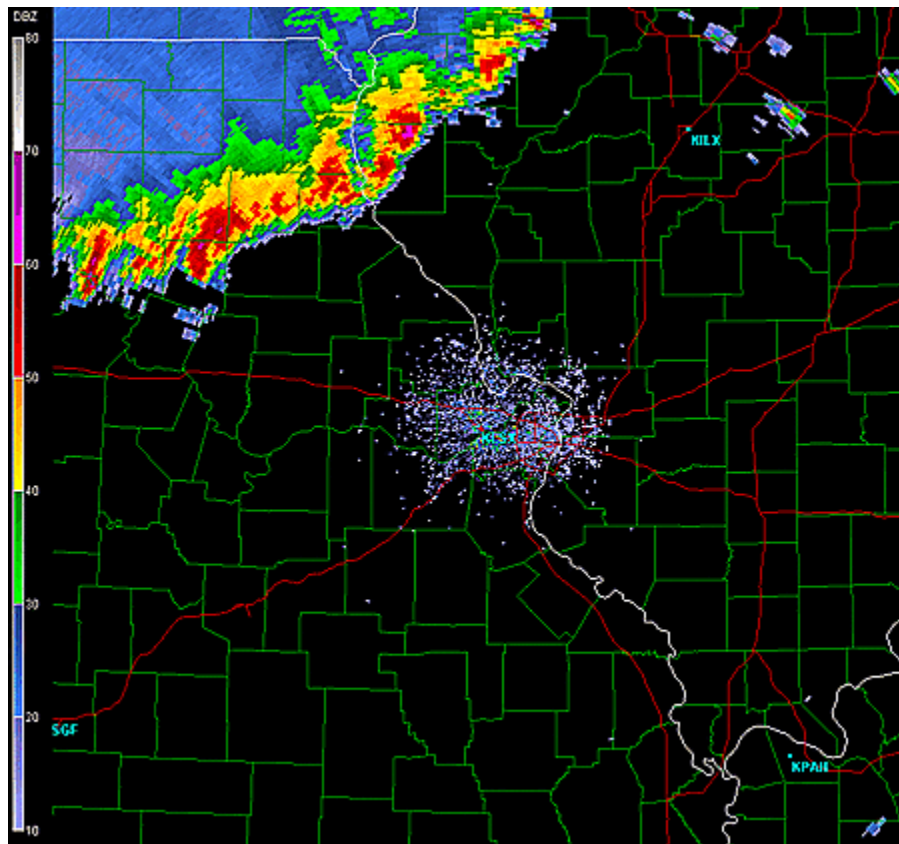
June 8th, 2005 Surface Map - 9 pm

Radar Data

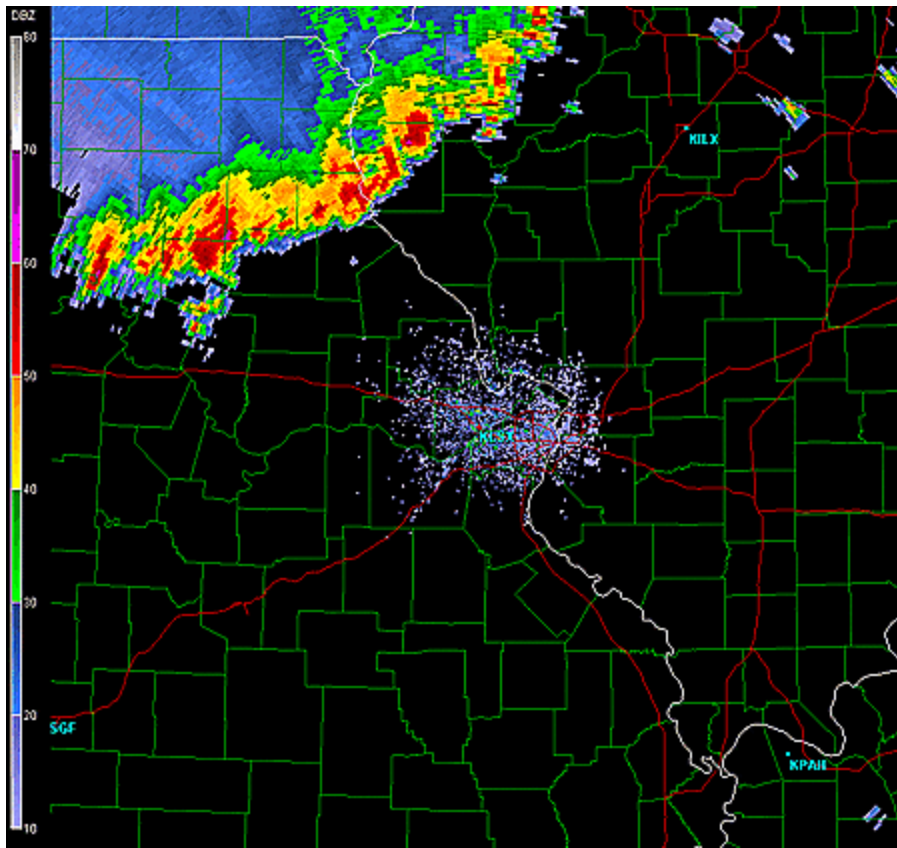


June 8th, 2005 - 01:44 PM

June 8th, 2005 - 01:53 PM

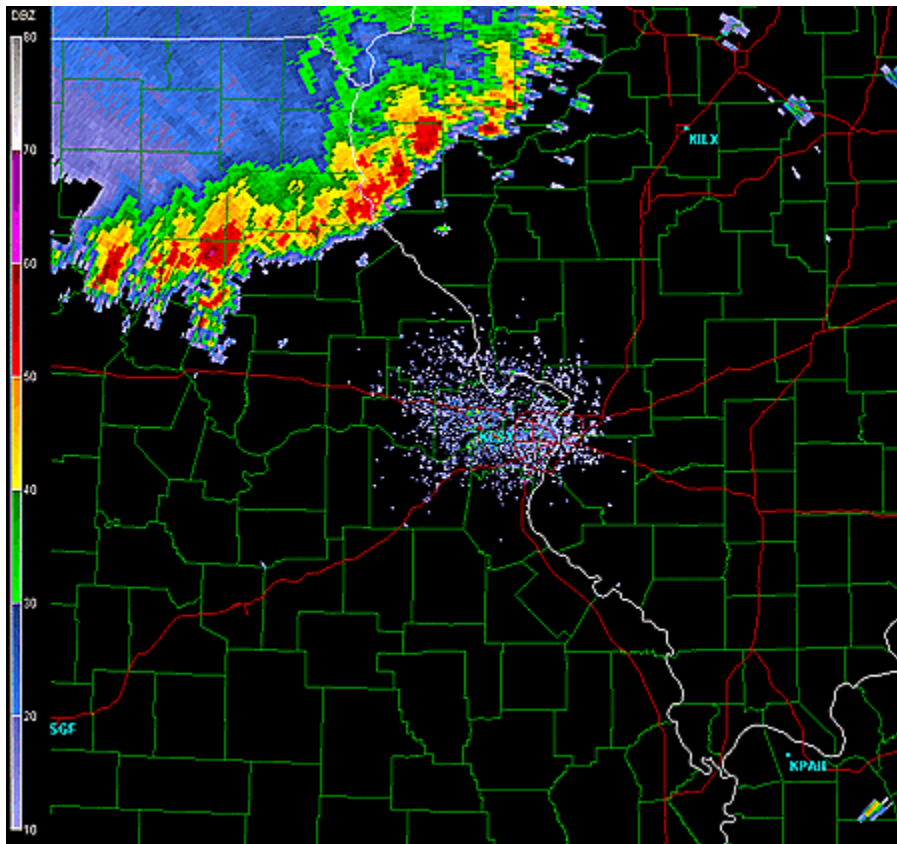


Radar Data

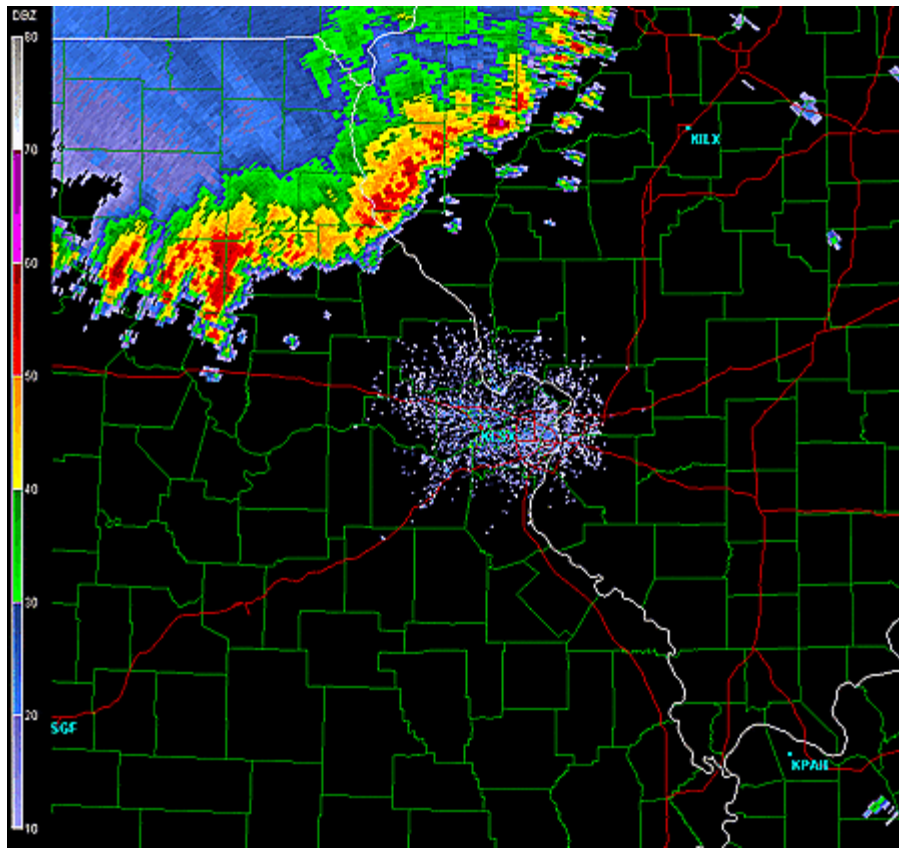


June 8th, 2005 - 02:02 PM

June 8th, 2005 - 02:10 PM

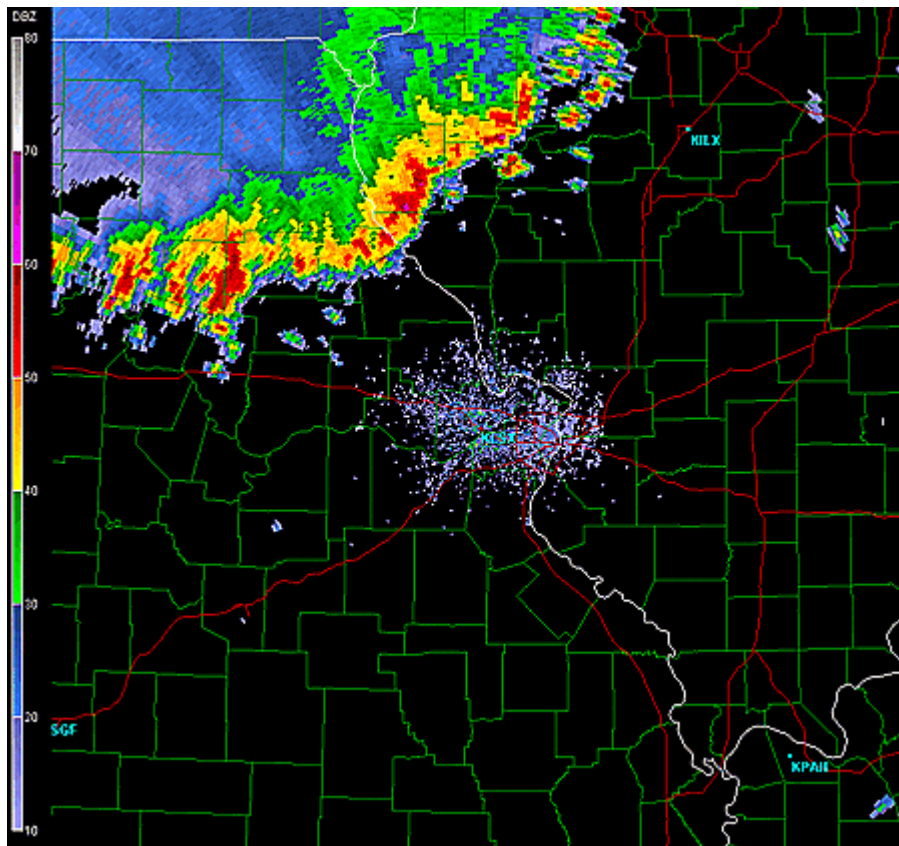


Radar Data

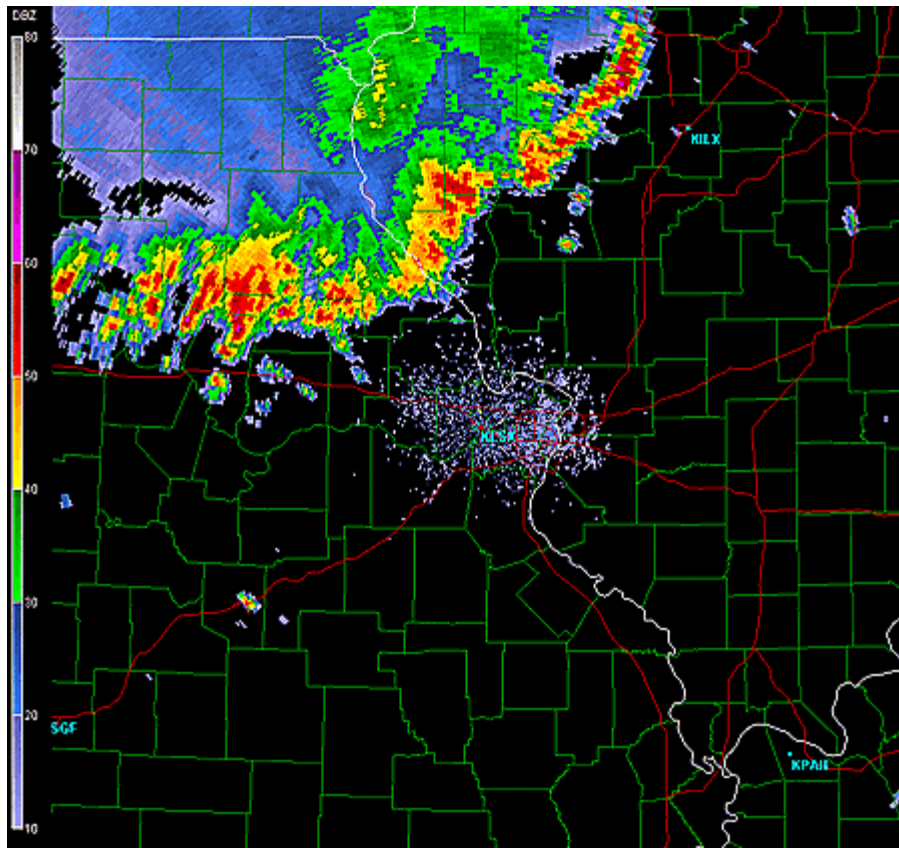


June 8th, 2005 - 02:19 PM

June 8th, 2005 - 02:27 PM

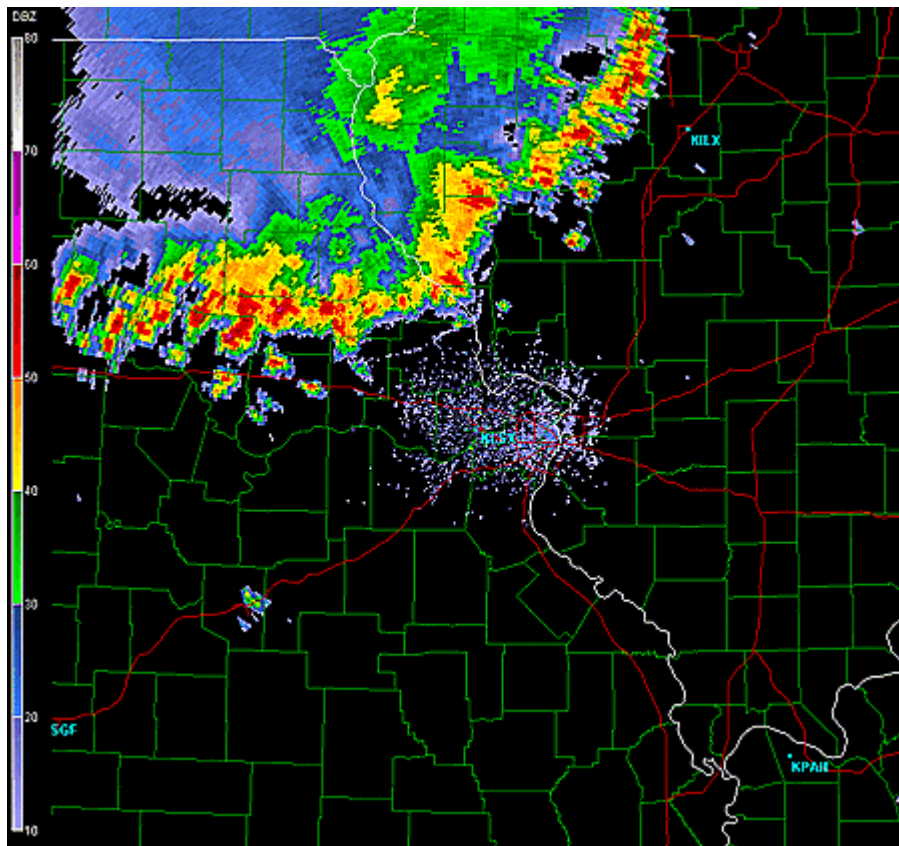


Radar Data

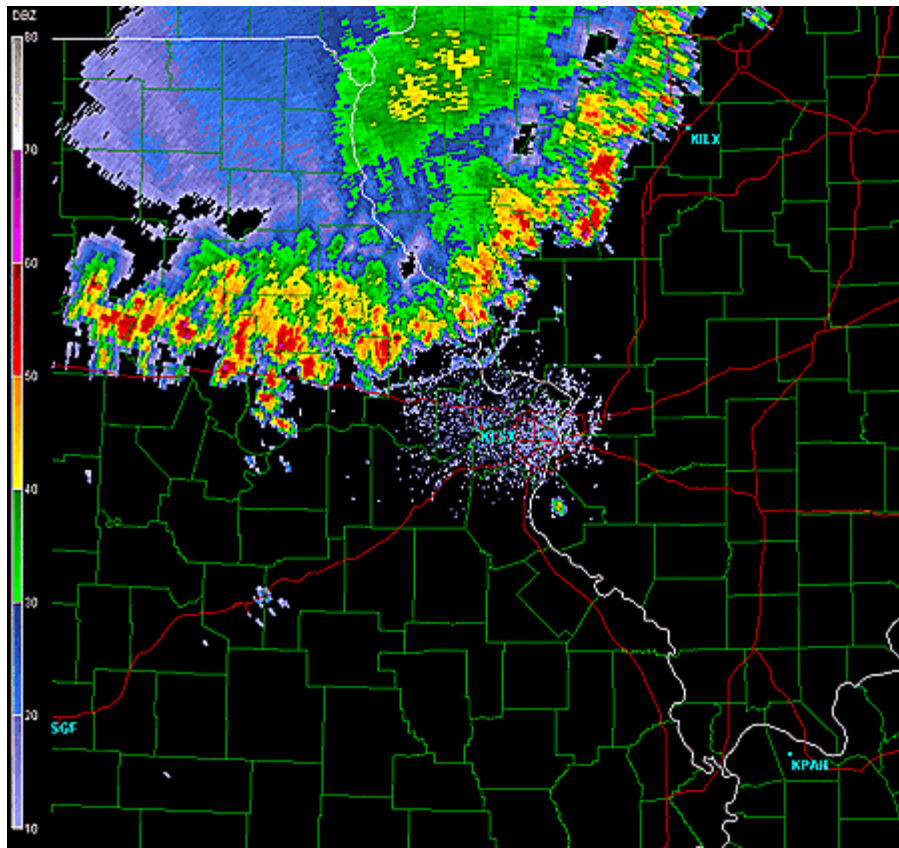


June 8th, 2005 - 02:45 PM

June 8th, 2005 - 02:53 PM

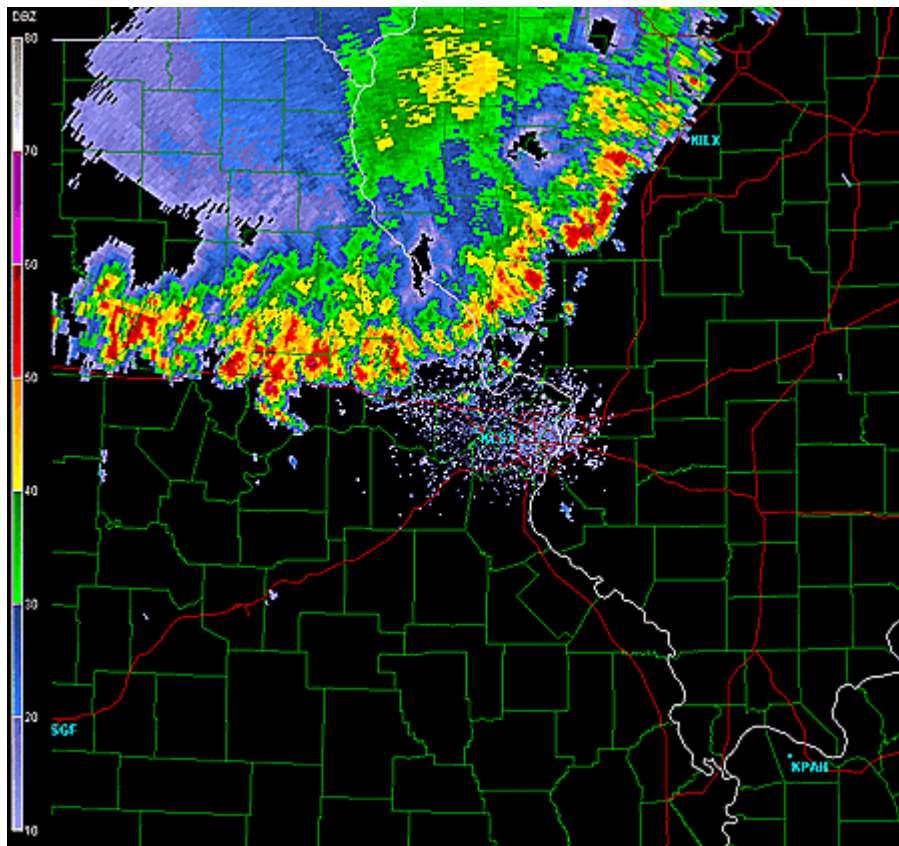


Radar Data

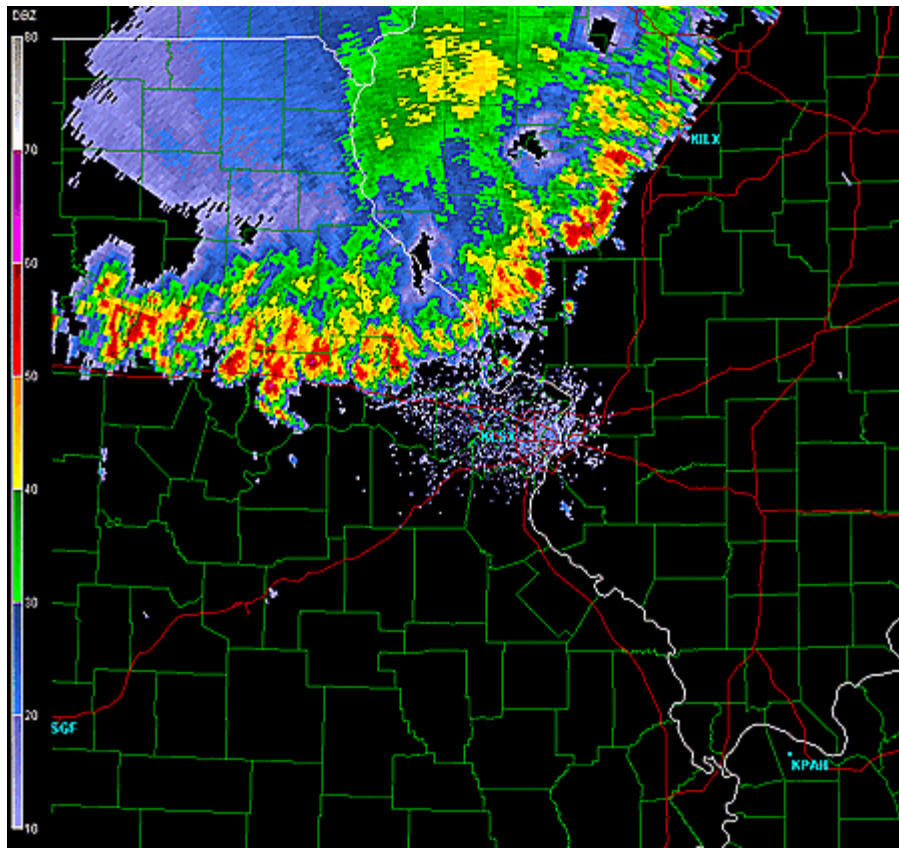


June 8th, 2005 - 03:13 PM

June 8th, 2005 - 03:24 PM

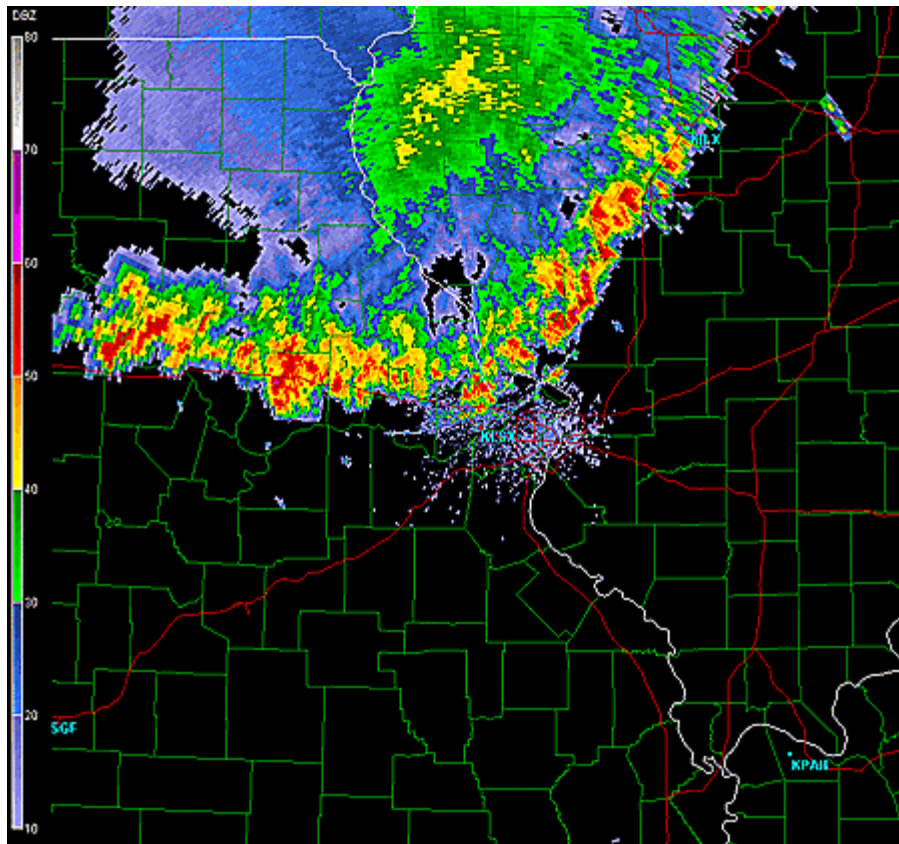


Radar Data

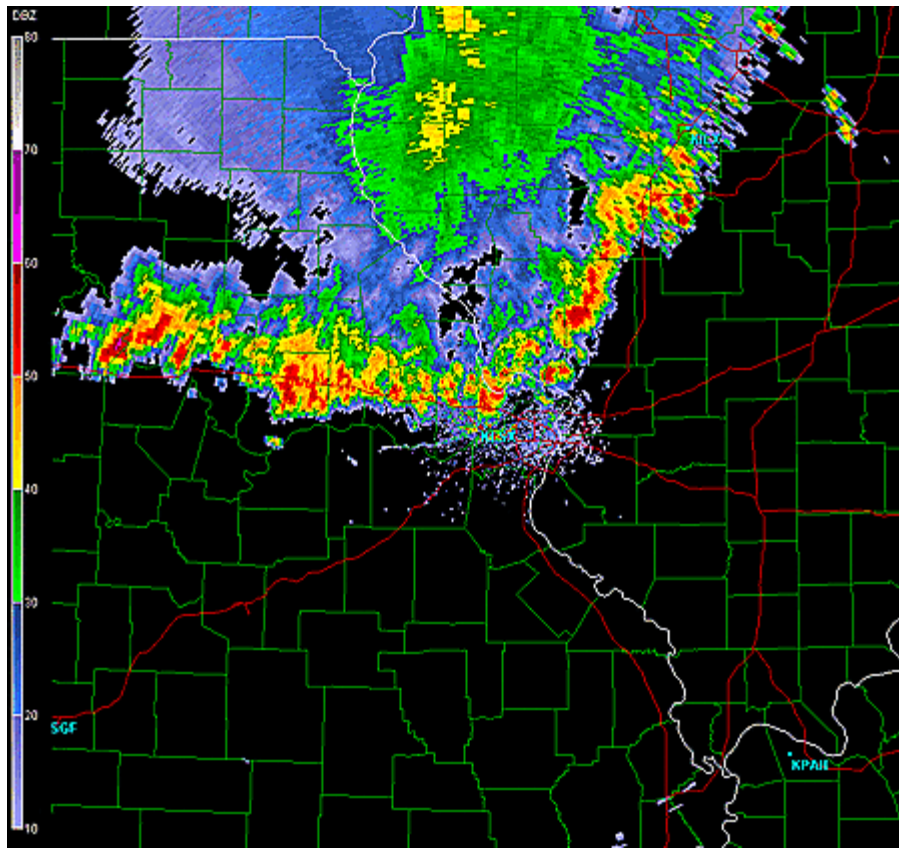


June 8th, 2005 - 03:34 PM

June 8th, 2005 - 03:54 PM

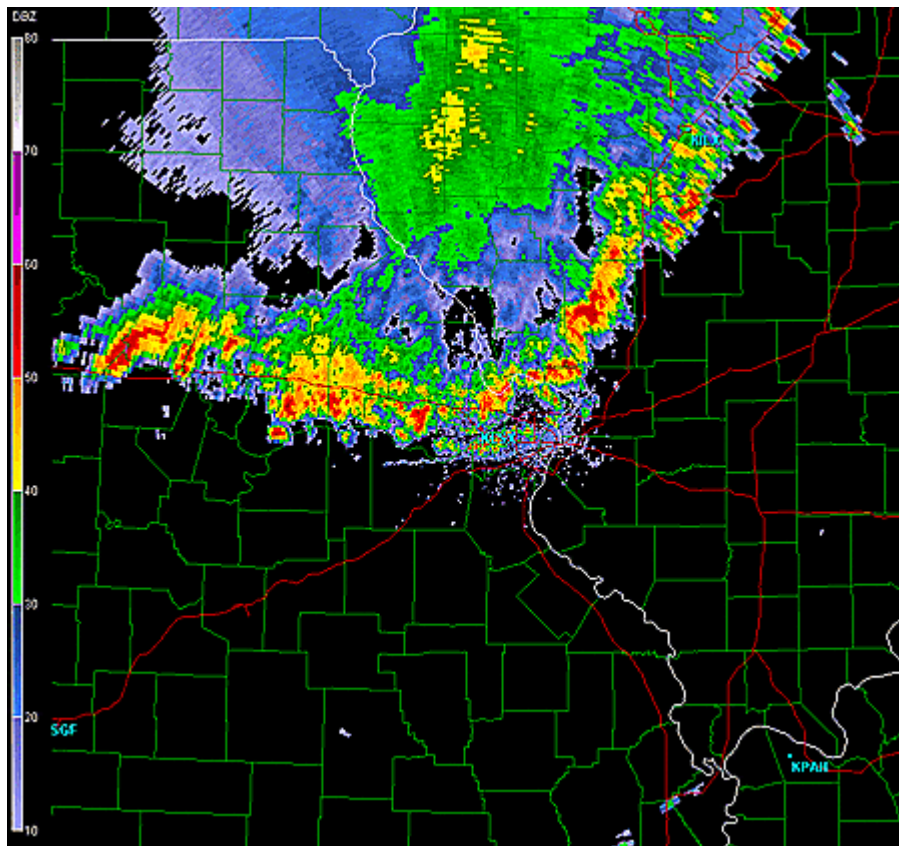


Radar Data

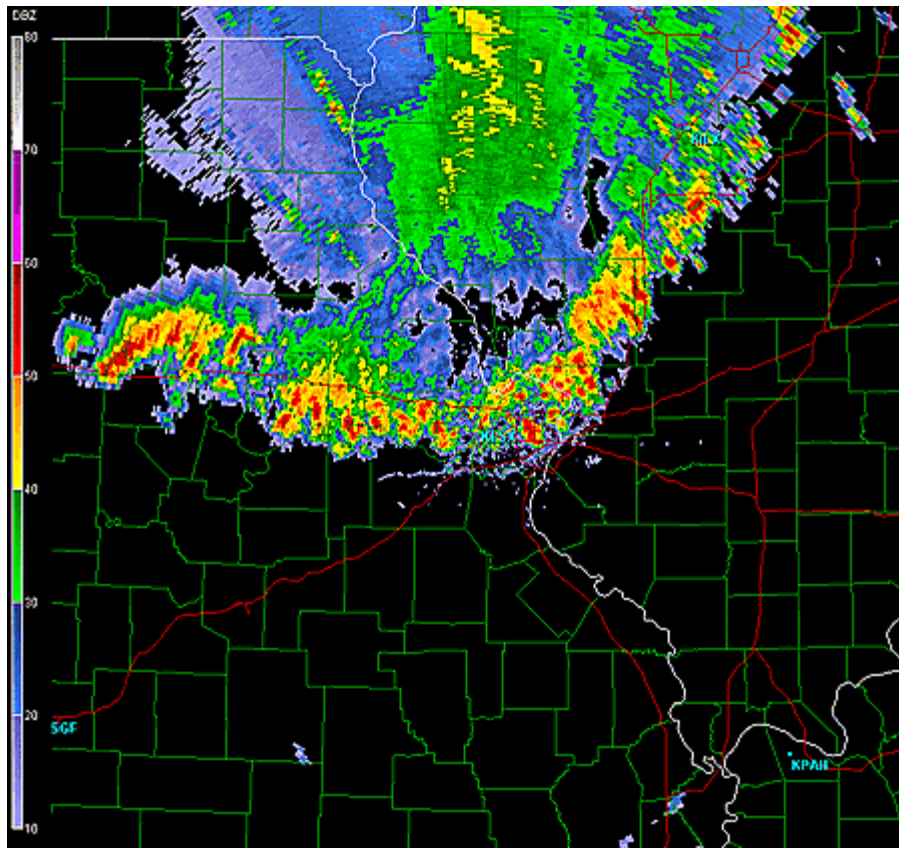


June 8th, 2005 - 04:03 PM

June 8th, 2005 - 04:13 PM

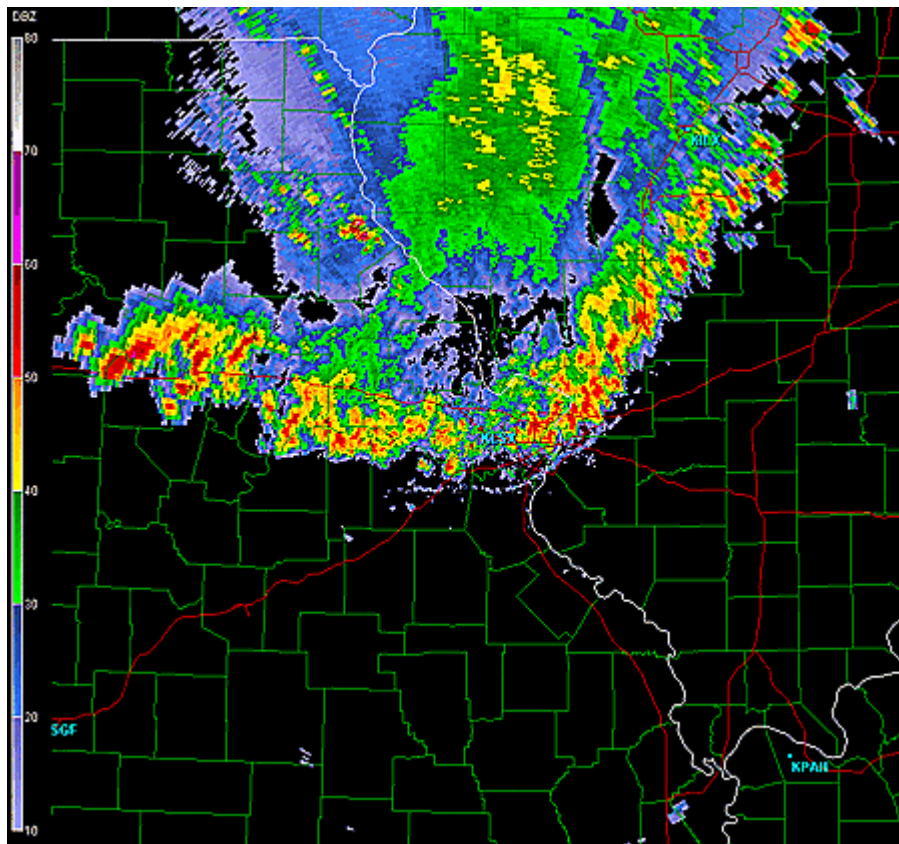


Radar Data

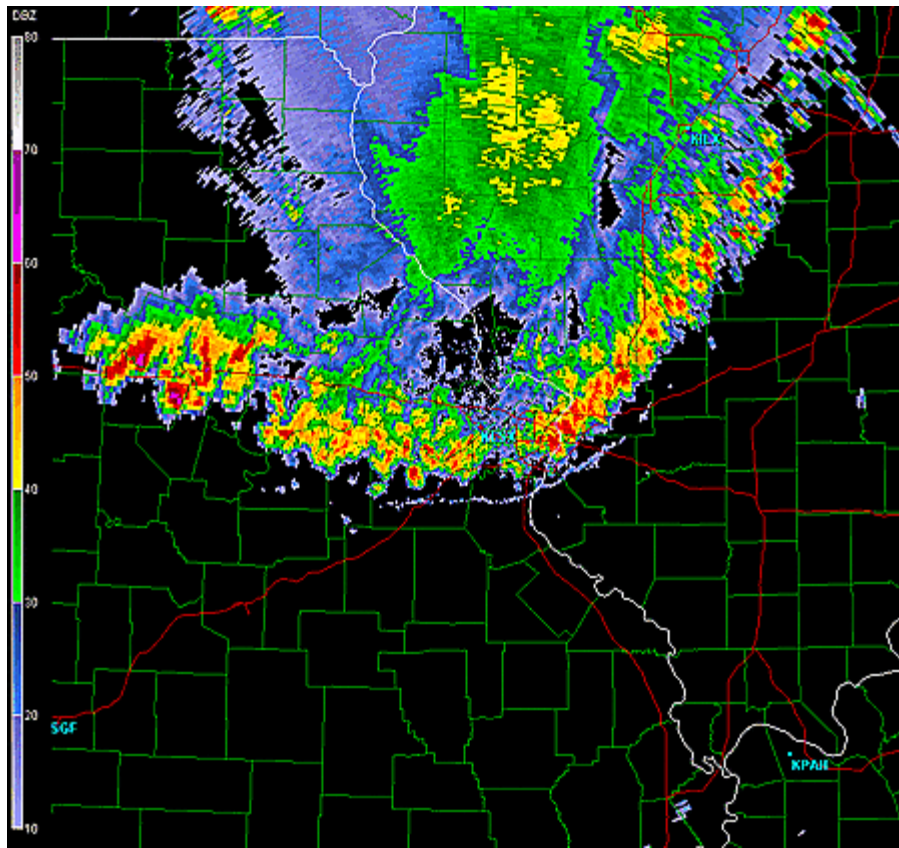


June 8th, 2005 - 04:23 PM

June 8th, 2005 - 04:33 PM

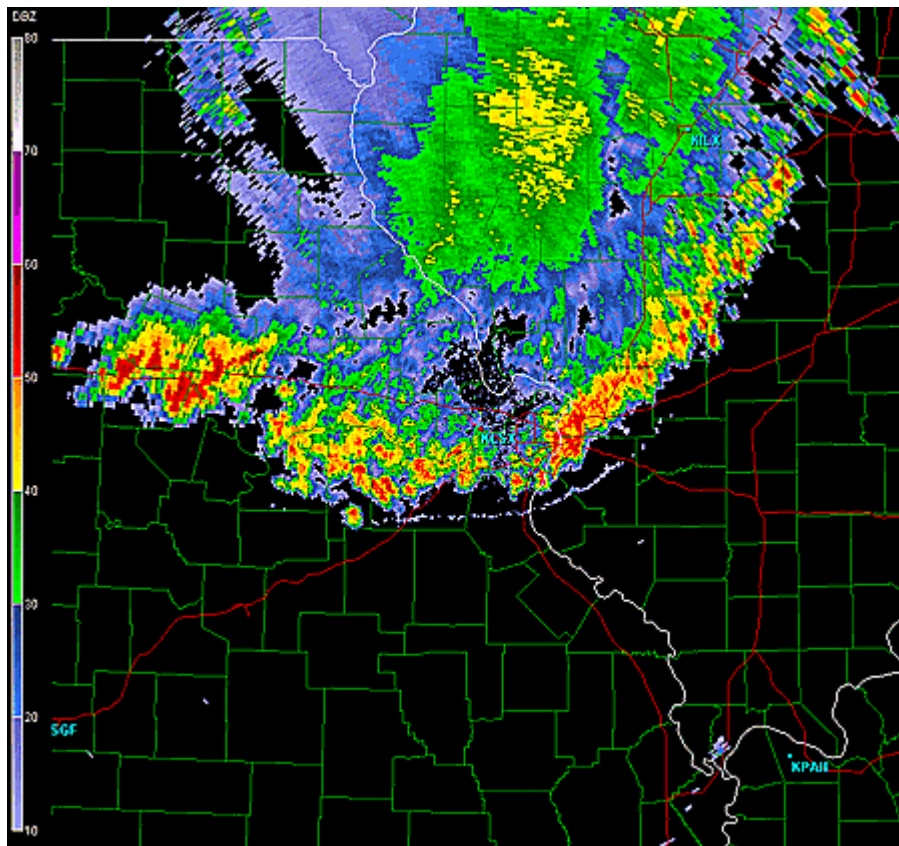


Radar Data

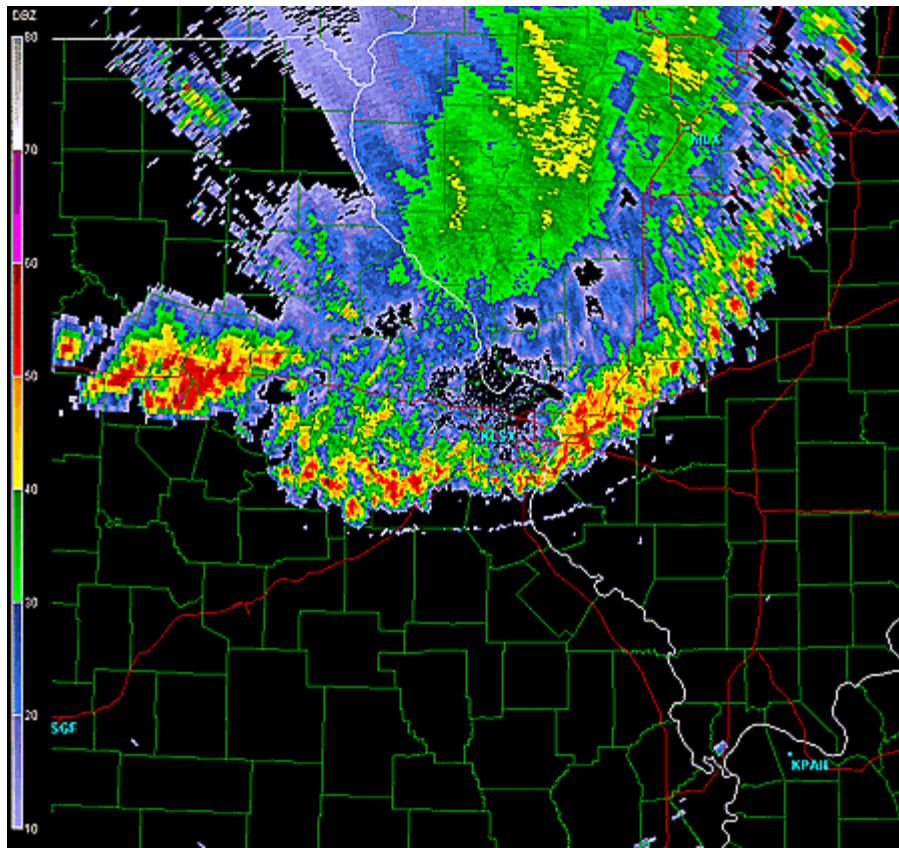


June 8th, 2005 - 04:43 PM

June 8th, 2005 - 04:53 PM

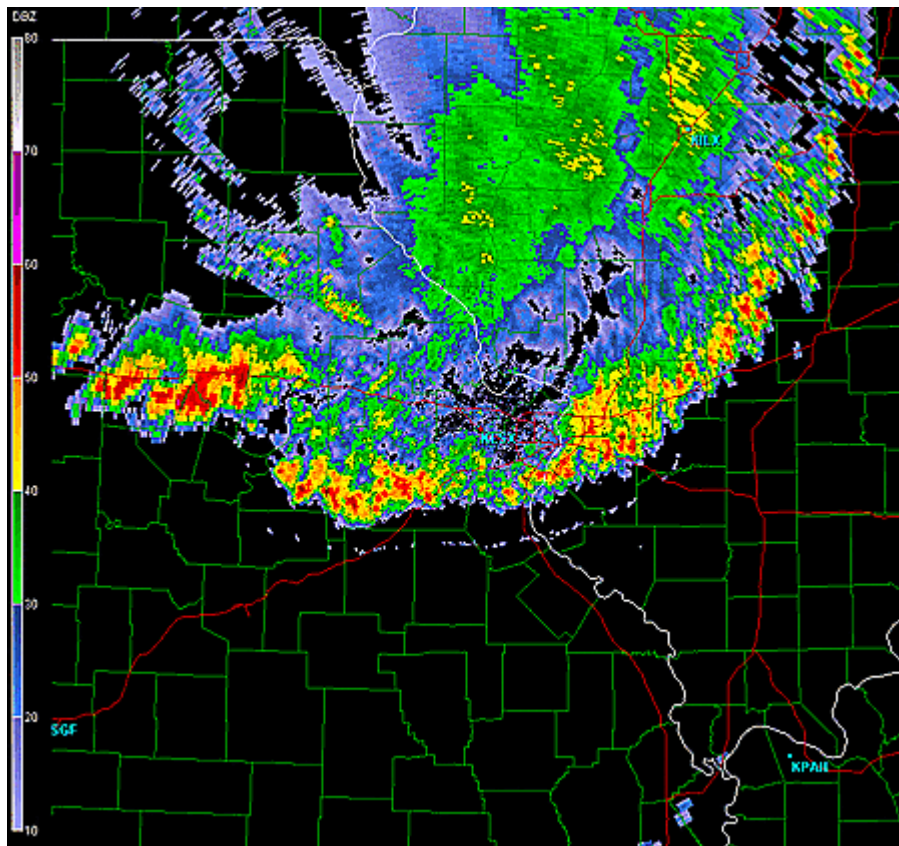


Radar Data



June 8th, 2005 - 05:03 PM

June 8th, 2005 - 05:13 PM



Please note that while the severe weather data presented in this event synopsis has been quality controlled, it is still considered unofficial. Official reports & statistics for severe weather events can be found in the **Storm Data** publication (<http://www.ncdc.noaa.gov/IPS/sd/sd.html>) or **Storm Events Database** (<http://www.ncdc.noaa.gov/stormevents/>), available from the National Centers for Environmental Information (NCEI) web page [formerly the National Climate Data Center (NCDC)].

More detailed tornado track information can be accessed using the National Weather Service Damage Assessment Toolkit for all tornadoes beginning in 2012. <https://apps.dat.noaa.gov/StormDamage/DamageViewer/>

Any questions regarding this event review should be address to w-lsx.webmaster@noaa.gov