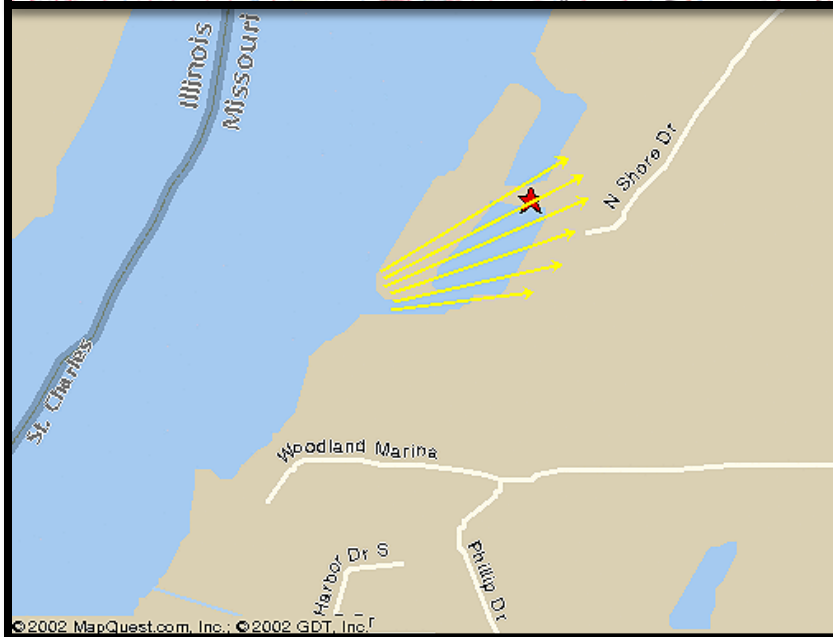


Downburst Wind Event Over St. Charles and Madison Counties

May 6th-7th, 2002

Overview

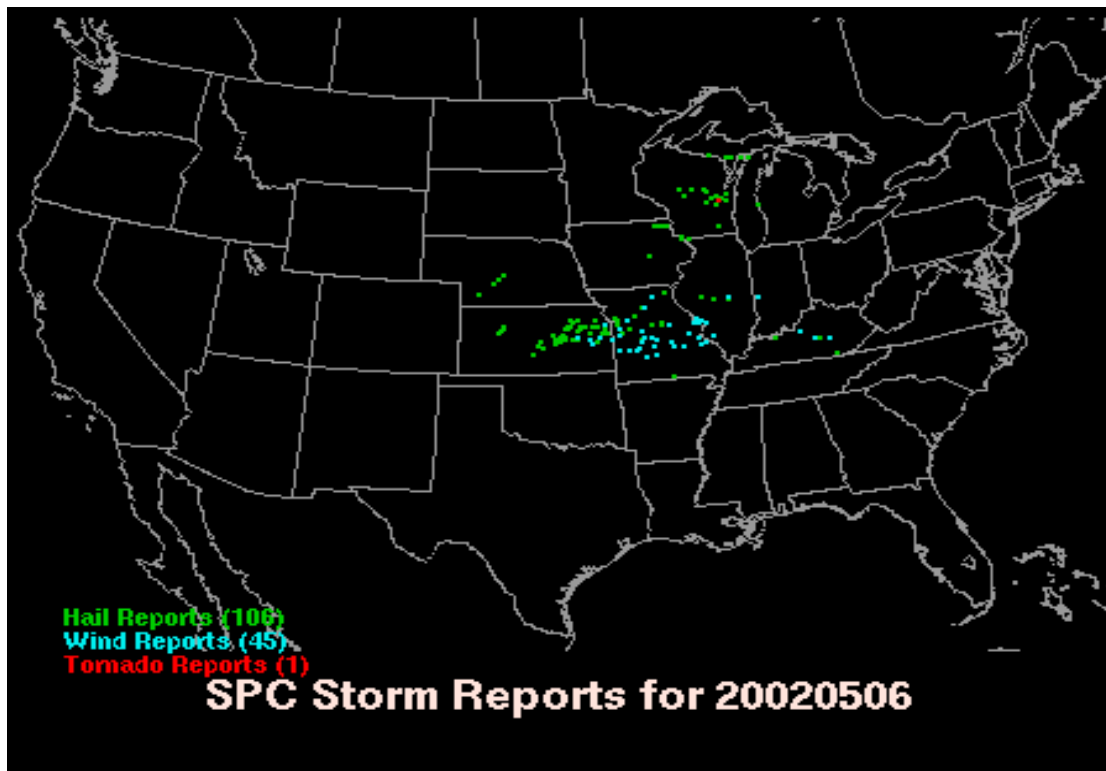
Thunderstorm winds produced minor damage throughout the confluence area of the Illinois, Mississippi, and Missouri Rivers incorporating the counties of Calhoun and Madison in Illinois, and St. Charles in Missouri. Smartt Field, located in northern St. Charles within the flood plain near the confluence of the Missouri and Mississippi Rivers, recorded gusts of 44 knots (51 mph) around 2:30 AM CDT. Wind speeds were likely a little stronger, perhaps between 50 and 60 knots (58-70 mph) throughout the confluence region. Snapped, uprooted, or broken trees comprised most of the damage. Two areas with enhanced damage did occur. The first occurred in south-central Calhoun County, and the second at the North Shore Marina along the Mississippi River in north-central St. Charles County. The first area was likely a small tornado of category F0. The second area appears to be a result of microburst winds greater than 70 mph. Residents at the marina reported a prolonged period of intense winds, perhaps lasting as long as 10 or 15 minutes.



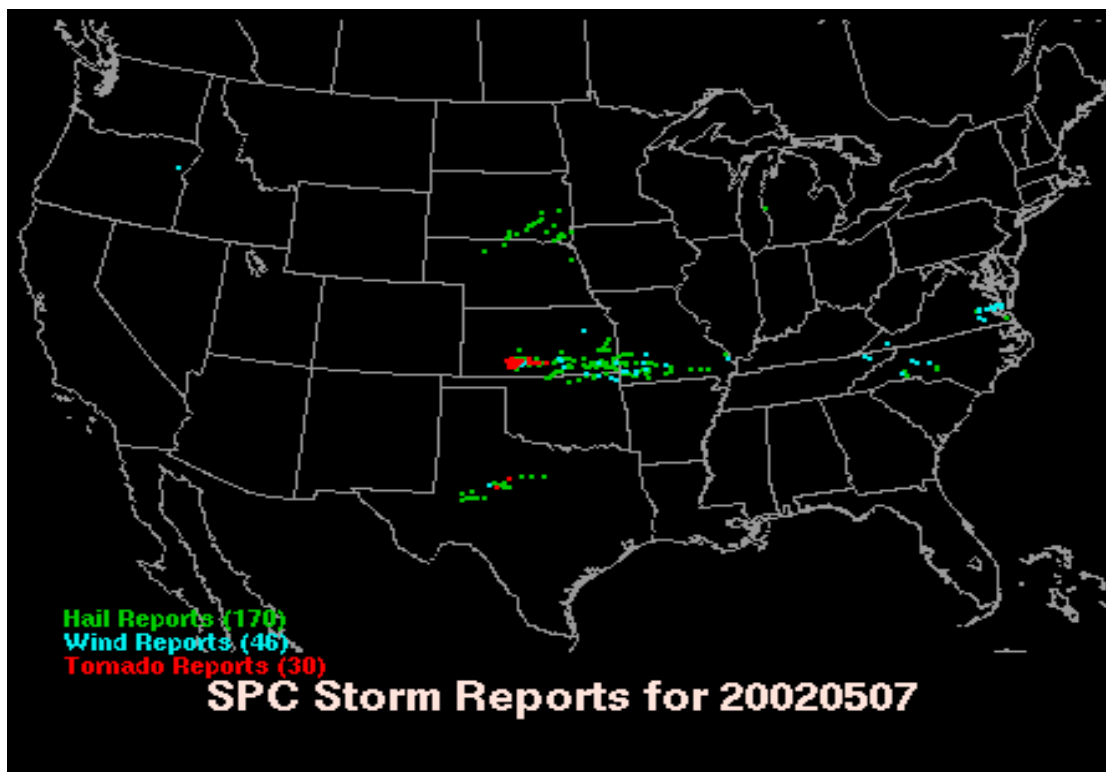
Swath of Wind Damage Across the Confluence Region

Downburst Damage Map at the North Shore Marina

Storm Reports



Storm Reports from 06 May 2002 courtesy of the Storm Prediction Center.



Storm Reports from 07 May 2002 courtesy of the Storm Prediction Center.

Preliminary Storm Reports for May 6 - 7th:

TIME (CDT):	LOCATION (COUNTY):	EVENT:	REMARKS:
1230 AM	KINGDOM CITY MO (CALLAWAY)	WIND DAMAGE	DAMAGE TO POWER POLES
0122 AM	COLUMBIA MO (BOONE)	FLOODING	HIGHWAY 40 CLOSED
0221 AM	OLD MONROE MO (LINCOLN)	60 MPH WIND GUST	REPORTED BY COUNTY SHERIF
0226 AM	PORTAGE DES SIOUX MO (ST CHARLES)	90 MPH WIND GUST	87 MPH WIND GUST
0235 AM	BRUSSELS IL (CALHOUN)	WIND DAMAGE	POWER LINES DOWN
0235 AM	DEER PLAIN IL (CALHOUN)	WIND DAMAGE	ROOF BLOWN OFF SHED
0235 AM	1S BRUSSELS IL (CALHOUN)	WIND DAMAGE	FARM BUILDINGS DESTROYED
0248 AM	2N ORCHARD FARMS MO (ST CHARLES)	WIND DAMAGE	NUMEROUS TREES DOWN
0250 AM	ALTON IL (MADISON)	WIND DAMAGE	POWER LINES DOWN
0250 AM	GODFREY IL (MADISON)	WIND DAMAGE	TREE BLOWN ONTO A HOUSE
0300 AM	BUNKER HILL IL (MACOUPIN)	0.88 INCH HAIL	REPORTED BY FIRE DEPT
0300 AM	3S NUTWOOD IL (JERSEY)	WIND DAMAGE	LARGE TREES DOWN
0300 AM	GODFREY IL (MADISON)	WIND DAMAGE	LARGE TREES DOWN
0325 AM	5SW STEELVILLE MO (CRAWFORD)	WIND DAMAGE	LARGE TREE DOWN
0345 AM	UNION MO (FRANKLIN)	WIND DAMAGE	POWER LINES DOWN
0355 AM	5W HILLSBORO MO (JEFFERSON)	WIND DAMAGE	SHERIFF REPORTED TREES DOWN
0400 AM	5N HILLSBORO MO (JEFFERSON)	WIND DAMAGE	SHERIFF REPORTED TREES DOWN
0400 AM	FESTUS MO (JEFFERSON)	WIND DAMAGE	SHERIFF REPORTED TREES DOWN
0415 AM	COLUMBIA IL (MONROE)	WIND DAMAGE	SHERIFF REPORTED TREES DOWN
0415 AM	2W WATERLOO IL (MONROE)	WIND DAMAGE	SHERIFF REPORTED TREES DOWN
0420 AM	BONNE TERRE MO (ST FRANCOIS)	WIND DAMAGE	LARGE TREE LIMBS DOWN
0430 AM	NEW ATHENS IL (ST. CLAIR)	WIND DAMAGE	SOME STRUCTURAL DAMAGE TO A HOME DUE TO A FALLEN TREE

Precipitation Reports:

STATION ID	STATION NAME	24 HOUR AMOUNT
STL	ST. LOUIS	1.55
COU	COLUMBIA	2.10
JEF	JEFFERSON CITY	1.47
SUS	CHESTERFIELD	1.57
SET	ST CHARLES	1.91
FAM	FARMINGTON	0.47
UIN	QUINCY	1.31
CPS	CAHOKIA	1.48
PPQ	PITTSFIELD	0.63
SAR	SPARTA	0.15
SLO	SALEM	0.72

NORTHEAST MISSOURI...

BWLM7	BOWLING GREEN 2NE	1.26
CANM7	CANTON L/D20	1.19
CDAM7	CANNON DAM	1.67
CLKM7	CLARKSVILLE L/D	1.61
EDNM7	EDINA	0.48
HNNM7	HANNIBAL MO	3.15
LABM7	LABELLE	0.92
LUSM7	LOUISIANA	1.35
NLDM7	NEW LONDON	2.66
NVTM7	NOVELTY 1E	1.89
PMYM7	PALMYRA	2.14
PRSM7	PARIS	1.29
SVRM7	SAVERTON L/D	1.88
SLBM7	SHELBINA	2.09
TAYM7	TAYLOR 5SW	0.60
VNDM7	VANDALIA	1.78

CENTRAL MISSOURI...

FREM7	FREEDOM	
FTNM7	FULTON	1.18
JWPM7	JEFFERSON CITY	2.30
MEXM7	MEXICO	1.58
RIFM7	RICH FOUNTAIN 3E	3.67
CMSM7	CHAMOIS	1.18
		1.80

EAST CENTRAL MISSOURI...

EBYM7	ELSBERRY 1S	3.52
FARM7	FARMINGTON	0.70
FESM7	FESTUS	0.65
PTSM7	POTOSI 5SW	1.10
RSEM7	ROSEBUD	1.70
UNNM7	UNION	1.10
WHGM7	WASHINGTON	1.41

Precipitation Reports:

ST. LOUIS METRONET...

UCTM7	UNIVERSITY CITY MO	1.65
HRVM7	HARVESTER I MO	1.42
MELM7	MEHLVILLE 1E	1.50
CAGM7	WINFIELD L/D	2.31
BCHM7	BOSCHERTOWN	1.65
SPEM7	ST CHARLES MO	1.62
SCHM7	ST CHARLES ELM PT	1.53
STCM7	ST CHARLES 7SSW	1.75
OFNM7	O FALLON MO	1.79
VLLM7	VALLEY PARK MO	1.45
LSX	WELDON SPRING NWS	1.45
HTVM7	HARVESTER III MO	1.41
ANSM7	HERITAGE LANDING	1.75
STPM7	ST PETERS	1.55
GRTI2	GRANITE CITY	1.99
ALNI2	MELVIN PRICE	2.00

SOUTHEAST MISSOURI...

FRDM7	FREDERICKTOWN	0.58
SGNM7	STE GENEVIEVE	0.47
SLLM7	SULLIVAN 3SE	1.04

WEST CENTRAL ILLINOIS...

GGGI2	GRIGGSVILLE	2.60
GDNI2	GOLDEN	0.41
MTSI2	MOUNT STERLING	1.18
PAYI2	PAYSON	2.88
PEYI2	PERRY 6NW	2.11
UIN	QUINCY	1.31
QLDI2	QUINCY L/D 21	1.69
RIPI2	RIPLEY	0.65
VRDI2	VIRDEN	1.36

CENTRAL ILLINOIS...

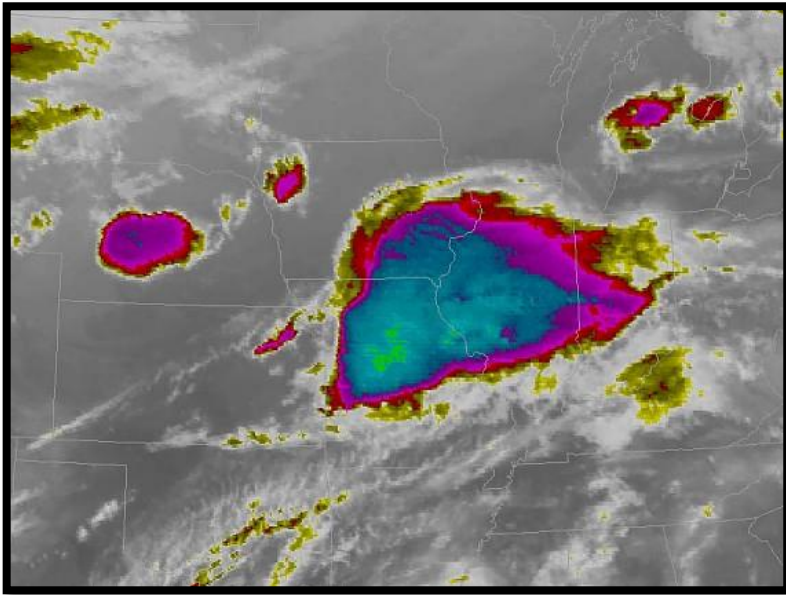
BTWI2	BROWNSTOWN 4SW	1.82
KNMI2	KIMMUNDY	1.59
PTKI2	PATOKA	1.35
LCFI2	LITCHFIELD	2.96
RAMI2	RAMSEY	3.61
SLOI2	SALEM IL	1.81
VNDI2	VANDALIA	2.54

Precipitation Reports:

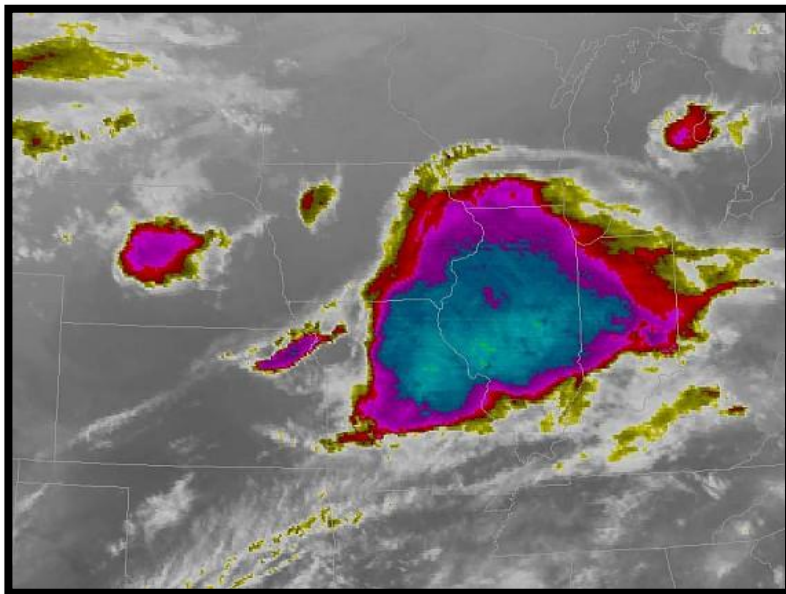
SOUTHWEST ILLINOIS...

ABRI2	ALBERS	2.03
CAYI2	CARLYLE	1.65
CNTI2	CENTRALIA	1.62
EDWI2	EDWARDSVILLE 2W	1.76
GRFI2	GRAFTON	1.99
GNFI2	GREENFIELD	2.05
GRVI2	GREENVILLE 2NE	1.80
HLBI2	HILLSBORO	2.60
IUKI2	IUKA 12SW	1.94
JVLI2	JERSEYVILLE 2SW	2.08
MTOI2	MOUNT OLIVE 1E	1.85
MEDI2	MEDORA	2.93
NSHI2	NASHVILLE 4NE	0.94
REDI2	RED BUD	1.06
STEI2	STEELEVILLE	0.39
WHLI2	WHITE HALL 1E	1.79

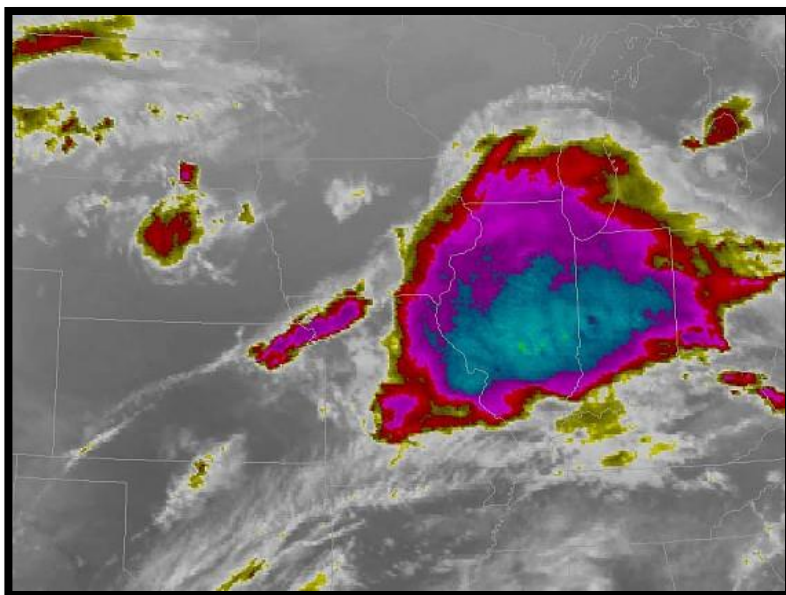
Satellite Imagery:



Infrared Satellite Imagery - 1:45 AM

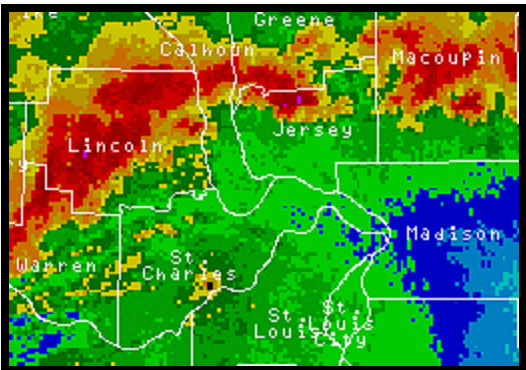


Infrared Satellite Imagery - 2:45 AM

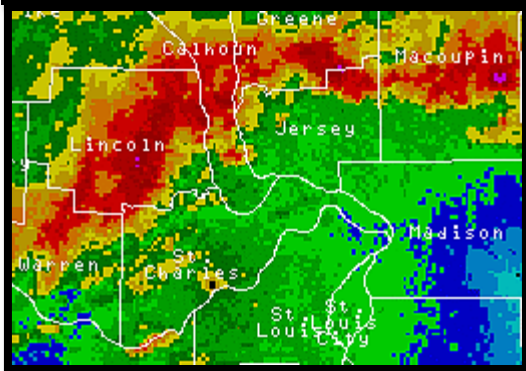


Infrared Satellite Imagery - 3:45 AM

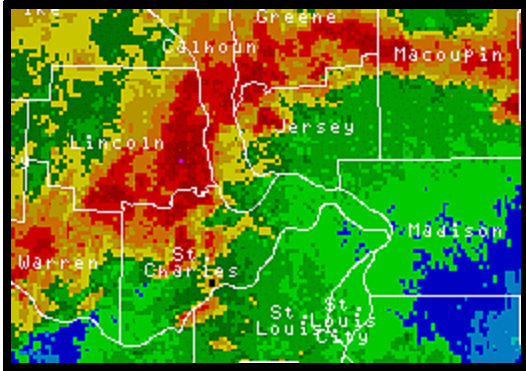
Radar Data:



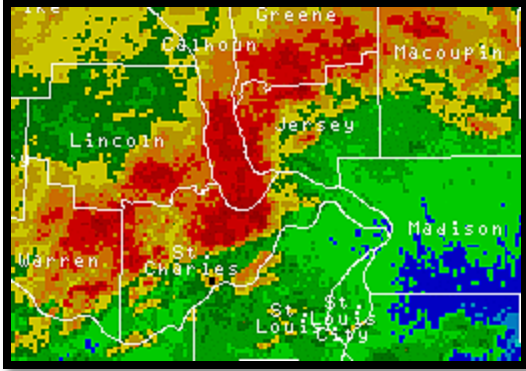
May 7th, 2002 - 1:51 AM



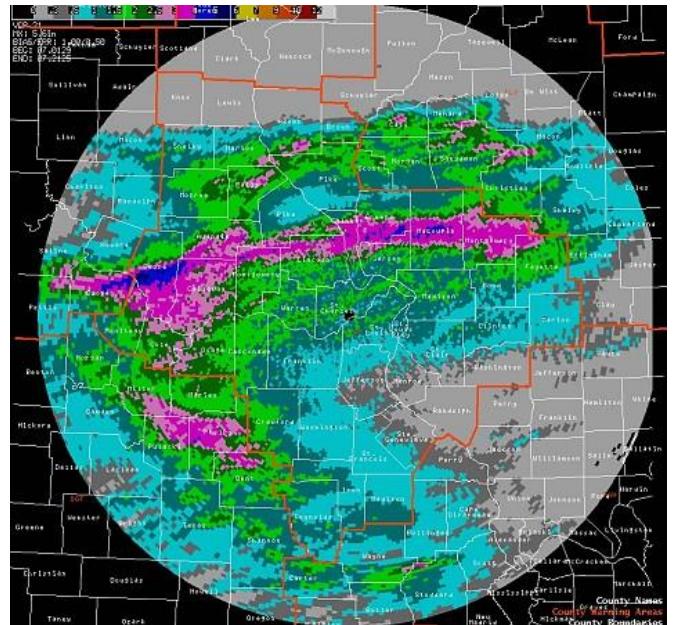
May 7th, 2002 - 2:01 AM



May 7th, 2002 - 2:21 AM



May 7th, 2002 - 2:11 AM



Radar-derived Precipitation Amounts

Please note that while the severe weather data presented in this event synopsis has been quality controlled, it is still considered unofficial. Official reports & statistics for severe weather events can be found in the **Storm Data** publication (<http://www.ncdc.noaa.gov/IPS/sd/sd.html>) or **Storm Events Database** (<http://www.ncdc.noaa.gov/stormevents/>), available from the National Centers for Environmental Information (NCEI) web page [formerly the National Climate Data Center (NCDC)].

More detailed tornado track information can be accessed using the National Weather Service Damage Assessment Toolkit for all tornadoes beginning in 2012. <https://apps.dat.noaa.gov/StormDamage/DamageViewer/>

Any questions regarding this event review should be address to w-lsx.webmaster@noaa.gov