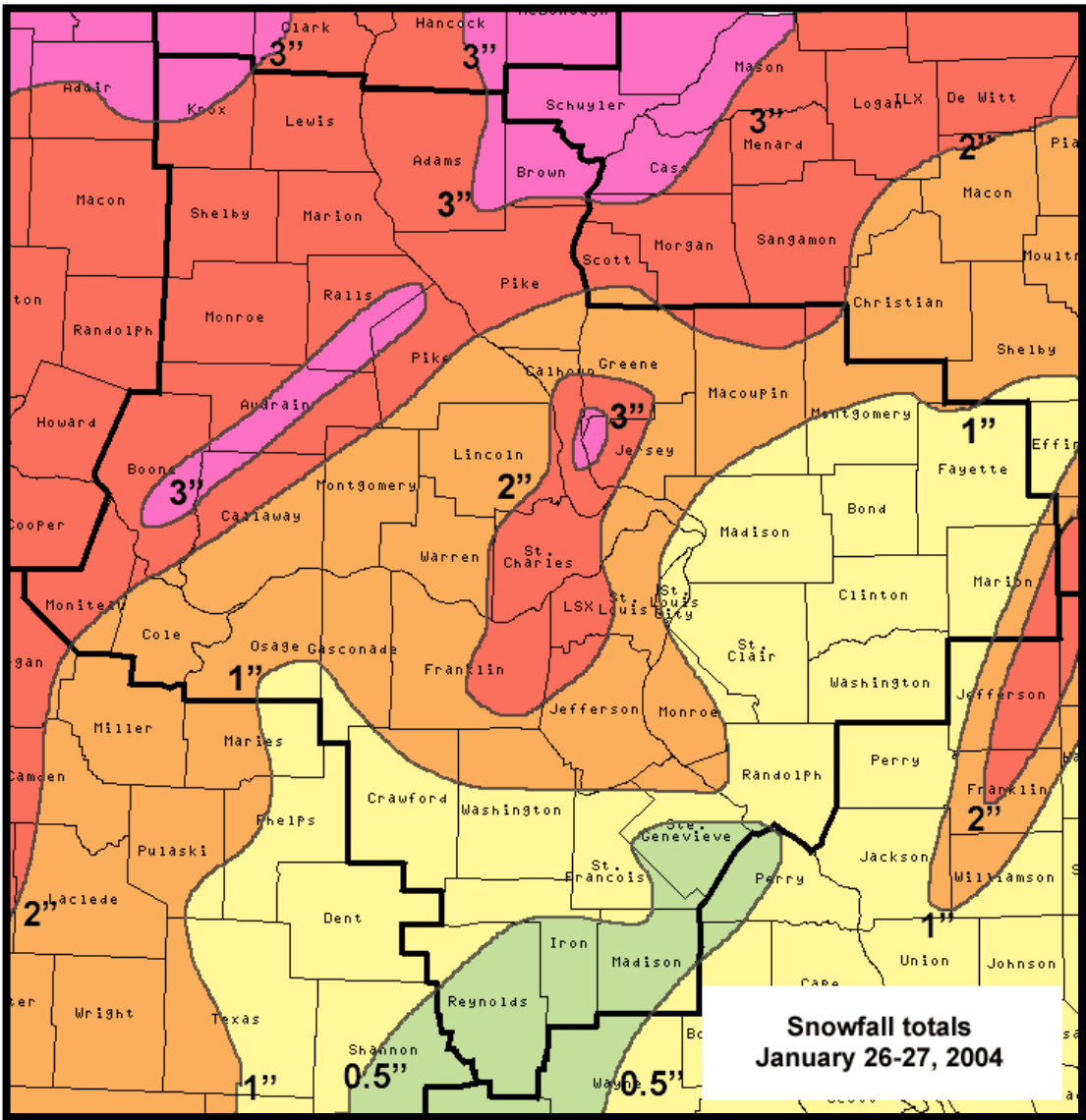


# Bi-state Area Ice Storm January 25<sup>th</sup>, 2004

## Overview

The winter of 2003/04 had been a benign one for residents of the bi-state region into mid January and folks were beginning to question whether we would experience any "real" winter weather that season. Mother nature answered those questions with a vengeance when freezing rain followed by sleet and snow blanketed central Missouri to west-central Illinois.

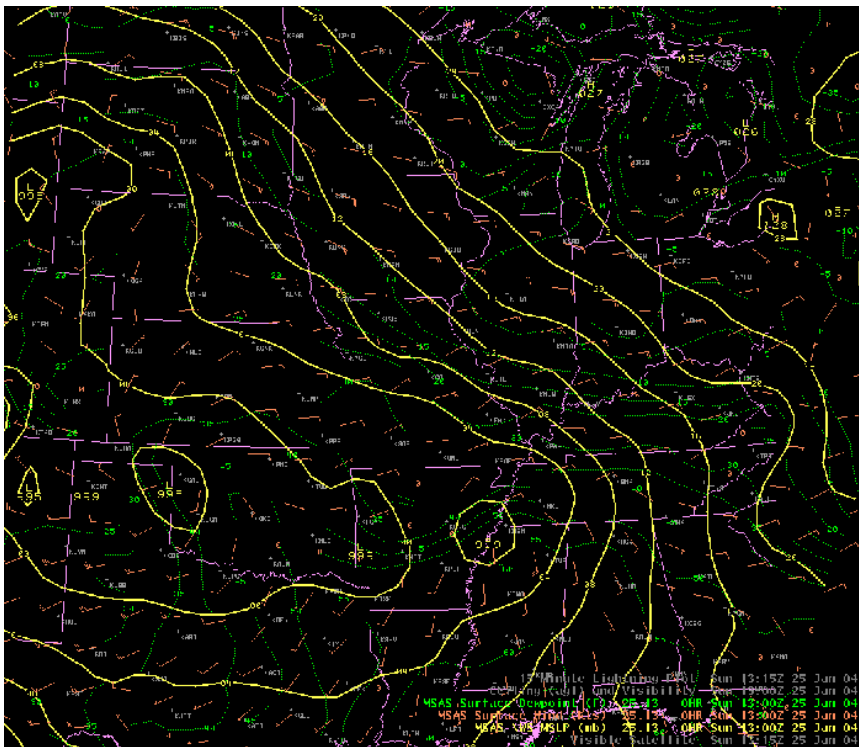
As the storm system approached the mid-Mississippi Valley on Saturday the 24<sup>th</sup>, a Winter Storm Watch was replaced with a Winter Storm Warning and by Sunday morning, area residents woke to a glaze of ice that was followed by sleet and snow. Accumulations were actually minor, but the combination of freezing rain and sleet made area roads treacherous and had highway crews working overtime trying to keep the main highway arteries clear. Since the storm hit early Sunday morning the 25<sup>th</sup>, most area residents stayed home and traffic was light, but even with drastically reduced traffic, accidents were numerous. The next couple of days, January 26<sup>th</sup> and 27<sup>th</sup>, yet another disturbance dumped a layer of snow on top of the ice and sleet.



This map represents the total snowfall for the period January 26<sup>th</sup> and 27<sup>th</sup>, 2004. These amounts fell on top of the ice storm totals from the 25<sup>th</sup>.

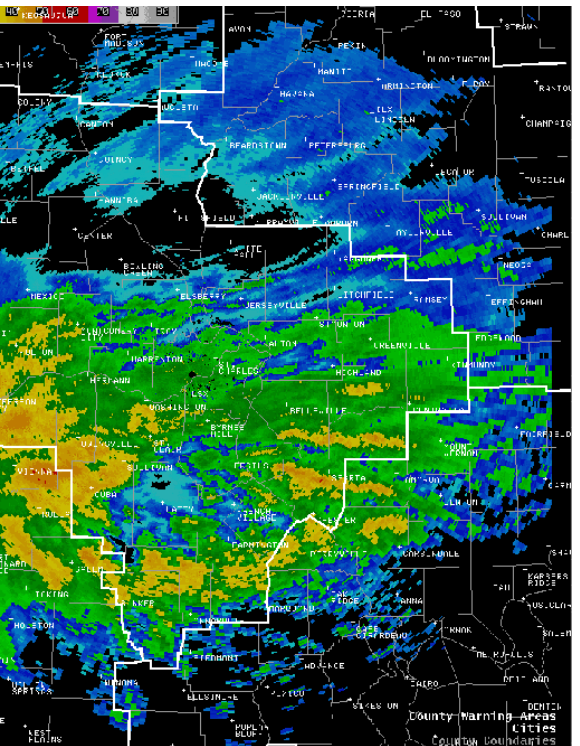
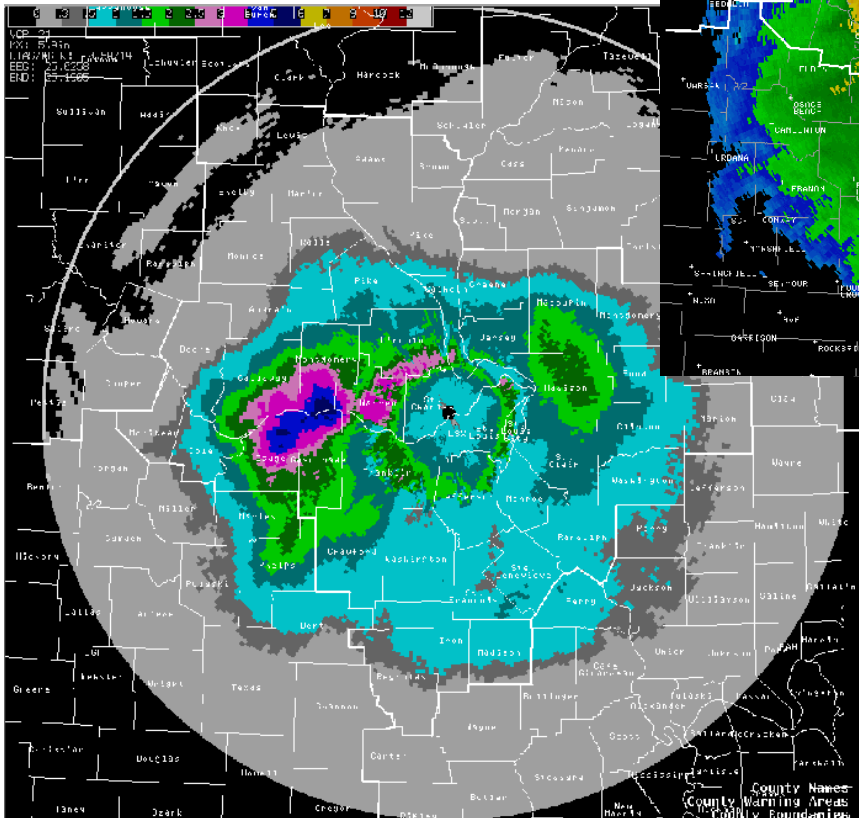
Snowfall totals  
January 26-27, 2004

# Radar Data



700 AM Surface Map on January 25<sup>th</sup>, 2004

730 AM Radar Reflectivity Image on January 25<sup>th</sup>, 2004



100 PM Radar Estimate of Storm Total Precipitation on January 25<sup>th</sup>, 2004

*Any questions regarding this event review should be address to [w-lsx.webmaster@noaa.gov](mailto:w-lsx.webmaster@noaa.gov)*