

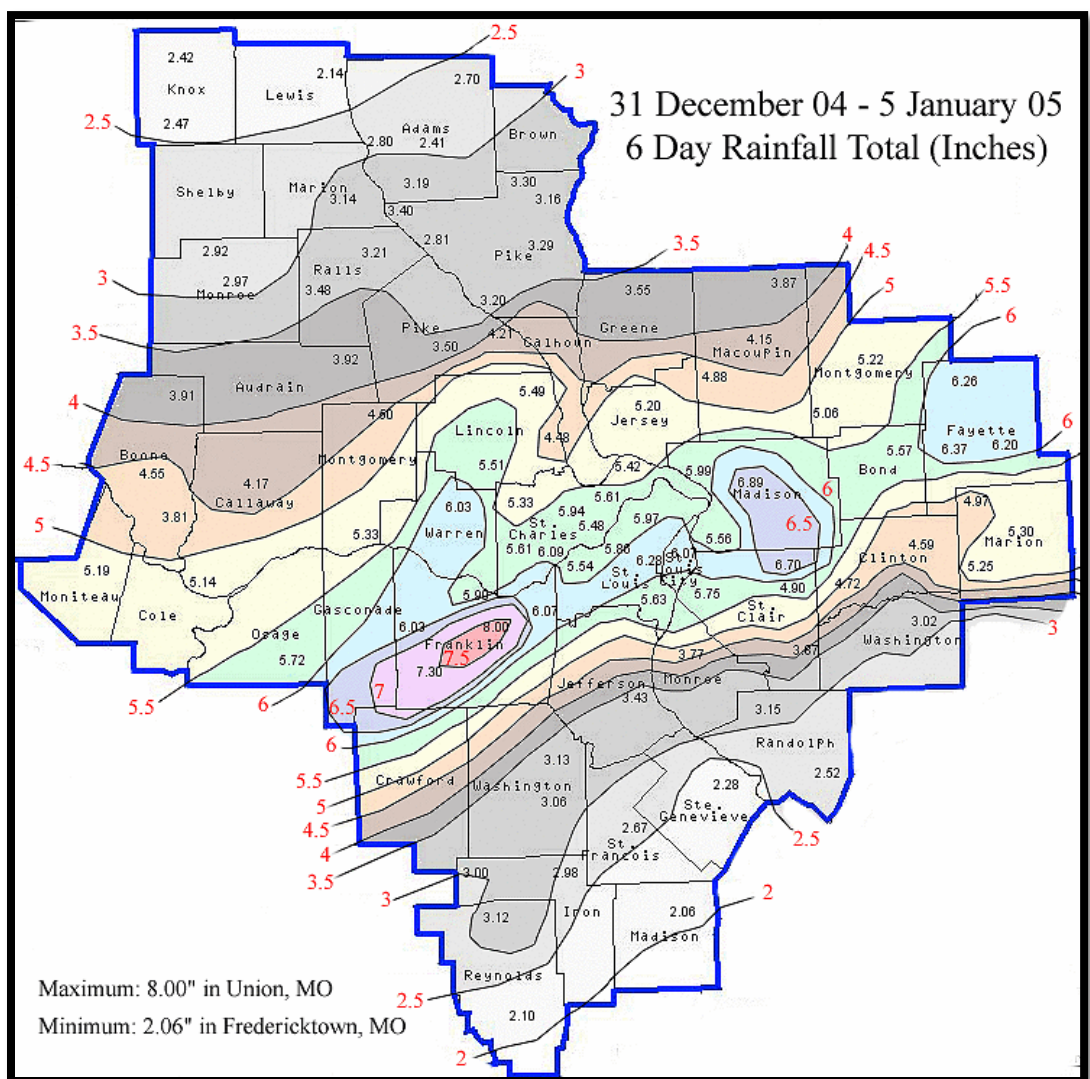
# Record Precipitation in the Bi-State Region

## January 1<sup>st</sup>-6<sup>th</sup>, 2005

### Overview

A cold front became stationary across southern Missouri and northern Arkansas and acted as a focus for a series of low pressure centers responsible for the record rainfall that fell the first 5 days of 2005. Areas of low pressure developed across Texas and Oklahoma and moved northeast along the quasi-stationary boundary, interacting with an unusually warm and unstable air mass south of the front. Several rounds of heavy rainfall drenched the Bi-State Region. The greatest amounts of rainfall fell along the I-44 corridor from Vichy/Rolla northeast through the St. Louis metropolitan area and into central Illinois. The maximum rainfall report came from Union, MO where 8.0 inches occurred the first week of January. Cold air slowly settled southward into portions of northeast Missouri and west-central Illinois resulting in a considerable amount of freezing rain followed by snowfall amounts of 1 to 2 inches.

Overall heavy rainfall sent rivers on the rise and most rose above flood stage. At the height of the flooding the Maries River was flowing at nearly 350% of normal and crested just shy of 20 feet, nearly 10 feet above flood stage.



## Precipitation Totals ending January 6<sup>th</sup>:

STATION ID	STATION NAME	1/1/2005	1/2/2005	1/3/2005	1/4/2005	1/5/2005	1/6/2005	TOTAL
STL	ST. LOUIS	0.22	0.06	1.72	0.56	2.40	1.01	5.97
COU	COLUMBIA	T	0.20	1.40	0.48	1.19	0.54	3.81
JEF	JEFFERSON CITY	0.01	0.14	1.48	0.34	1.76	0.71	4.44
SUS	CHESTERFIELD	0.10	0.05	1.82	0.36	2.26	0.95	5.54
SET	ST CHARLES	0.19	0.06	1.38	0.85	2.09	0.85	5.42
FAM	FARMINGTON	0.00	0.10	0.03	0.08	0.94	0.91	2.06
UIN	QUINCY	0.05	0.21	0.71	0.54	0.60	0.30	2.41
CPS	CAHOKIA	0.00	0.36	1.97	0.31	2.14	0.97	5.75
BLV	BELLEVILLE/SCOTT	0.00	0.07	1.25	0.46	1.90	1.22	4.90
SLO	SALEM	0.00	0.08	0.79	0.33	1.51	1.30	4.01
NORTHEAST MISSOURI								
BWLM7	BOWLING GREEN 2NE	0.00	0.26	0.50	0.70	1.73	0.31	3.50
CANM7	CANTON L/D20	0.00	0.27	0.41	0.57	0.59	0.30	2.14
CDAM7	CANNON DAM	0.00	0.24	0.95	0.62	1.18	0.49	3.48
CLKM7	CLARKSVILLE L/D	0.00	0.05	1.41	0.60	1.47	0.68	4.21
EDNM7	EDINA	0.00	0.55	0.35	0.58	0.55	0.39	2.42
HNNM7	HANNIBAL MO	0.04	0.42	0.82	0.52	1.15	0.45	3.40
LUSM7	LOUISIANA	0.00	0.22	0.49	0.70	1.30	0.49	3.20
NLDM7	NEW LONDON	0.03	0.48	0.47	0.61	1.16	0.46	3.21
NVTM7	NOVELTY 1E	0.00	0.53	0.30	0.62	0.72	0.30	2.47
PMYM7	PALMYRA	0.00	0.27	0.99	0.54	1.02	0.32	3.14
PRSM7	PARIS	0.00	0.23	0.68	0.63	1.08	0.35	2.97
SVRM7	SAVERTON L/D	0.00	0.25	0.50	0.65	1.12	0.29	2.81
SLBM7	SHELBINA	0.02	0.25	0.73	0.53	1.05	0.34	2.92
VNDM7	VANDALIA	0.01	0.25	0.78	0.48	1.80	0.60	3.92
CENTRAL MISSOURI								
CALM7	CALIFORNIA	T	0.15	2.15	0.27	2.17	0.45	5.19
UMCM7	COLUMBIA U OF M	0.00	0.11	1.51	0.70	1.80	0.43	4.55
CTAM7	CENTRALIA	0.06	0.06	0.80	0.79	1.55	0.65	3.91
JWPM7	JEFFERSON CITY	0.00	0.14	1.70	0.36	2.21	0.73	5.14
MEXM7	MEXICO	0.01	0.06	0.75	0.95	1.67	0.73	4.17
RIFM7	RICH FOUNTAIN 3E	T	0.00	1.66	0.10	3.45	0.51	5.72
EAST CENTRAL MISSOURI								
EBYM7	ELSBERRY 1S	0.00	0.00	2.18	0.88	1.60	0.83	5.49
FESM7	FESTUS	0.00	0.00	0.65	0.18	1.35	1.25	3.43
HRNM7	HERMANN	0.04	0.01	1.74	0.41	2.25	0.88	5.33
MDDM7	MIDDLETOWN	0.00	0.10	0.70	0.80	2.00	0.90	4.50
OLMM7	OLD MINES	0.03	0.15	0.33	0.23	1.22	1.17	3.13
PCFM7	PACIFIC 3S	0.07	0.15	2.00	0.24	2.63	0.98	6.07
WTNM7	WARRENTON	0.08	0.20	2.00	0.30	2.80	0.65	6.03
WHGM7	WASHINGTON	0.07	0.05	1.88	0.14	3.06	0.70	5.90

## Precipitation Totals ending January 6<sup>th</sup>:

### ST. LOUIS METRONET

BCHM7	BOSCHERTOWN	0.08	0.15	1.37	0.58	2.38	1.05	5.61
GRTI2	GRANITE CITY	0.19	0.17	1.50	0.48	2.44	0.78	5.56
HTVM7	HARVESTER III	0.05	0.08	1.43	0.24	2.88	0.80	5.48
FMDM7	LAKE ST LOUIS 2SW	0.14	0.00	1.68	0.32	2.24	1.26	5.64
MELM7	MEHLVILLE 1E	0.05	0.08	2.20	0.15	2.25	0.90	5.63
ALNI2	MELVIN PRICE	0.15	0.07	1.07	0.83	2.65	1.22	5.99
OFLM7	O FALLON MO	0.10	0.01	2.14	0.20	2.84	0.65	5.94
OLNM7	O FALLON 2S	0.12	0.02	1.67	0.27	2.41	1.11	5.60
SCHM7	ST CHARLES ELM PT	0.12	0.01	1.44	0.57	2.66	1.06	5.86
OFNM7	ST PAUL MO 4NE	0.10	0.06	1.32	0.31	2.65	0.90	5.34
SPEM7	ST PETERS 2SSE	0.01	0.03	1.15	0.58	2.50	0.98	5.25
SSCM7	STL SCIENCE CENTER	0.06	0.22	1.78	0.19	3.15	0.67	6.07
TRYM7	TROY MO	T	0.01	1.86	0.87	1.99	0.78	5.51
UCTM7	UNIVERSITY CITY MO	0.19	0.15	1.56	0.30	2.97	1.11	6.28
LSX	WELDON SPRING NWS	T	0.08	1.60	0.63	2.66	1.12	6.09
WNTM7	WENTZVILLE	0.08	0.20	2.00	0.35	2.80	0.10	5.53
CAGM7	WINFIELD L/D	0.00	0.00	1.14	0.64	1.56	1.14	4.48

### SOUTHEAST MISSOURI

BLLM7	BELLEVIEW 4SE	T	0.24	0.09	0.17	1.37	1.11	2.98
ELLM7	ELLINGTON	0.00	0.20	0.20	0.30	0.20	1.20	2.10
FARM7	FARMINGTON	0.00	0.08	0.07	0.18	1.15	1.19	2.67
FRDM7	FREDERICKTOWN	0.00	0.05	0.10	0.10	1.04	0.77	2.06
OATM7	OATES	0.30	0.12	0.18	0.17	1.45	0.90	3.12
PTSM7	POTOSI 5SW	0.07	0.19	0.14	0.18	1.53	0.95	3.06
RSEM7	ROSEBUD	0.01	0.09	1.90	0.14	3.27	0.62	6.03
SGNM7	STE GENEVIEVE	0.00	0.10	0.11	0.00	1.17	0.90	2.28
VBRM7	VIBURNAM	0.00	0.10	0.10	0.20	1.30	1.30	3.00

### WEST CENTRAL ILLINOIS

CLVI2	CARLINVILLE	0.00	0.12	0.68	0.57	1.92	0.86	4.15
GGGI2	GRIGGSVILLE	0.08	0.03	0.64	0.60	1.00	0.81	3.16
GDN12	GOLDEN	0.06	0.20	0.55	0.63	0.73	0.53	2.70
PAYI2	PAYSON	0.00	0.31	1.01	0.50	1.05	0.32	3.19
PEYI2	PERRY 6NW	0.03	0.33	0.87	0.56	1.06	0.45	3.30
PTTI2	PITTSFIELD	0.10	0.12	0.70	0.55	1.42	0.40	3.29
QLDI2	QUINCY L/D 21	0.02	0.08	0.51	0.62	1.32	0.25	2.80
VRDI2	VIRDEN	0.05	0.12	0.75	0.77	1.25	0.93	3.87
WHLI2	WHITE HALL	0.00	0.03	0.75	0.70	1.21	0.86	3.55

## Precipitation Totals ending January 6<sup>th</sup>:

### CENTRAL ILLINOIS

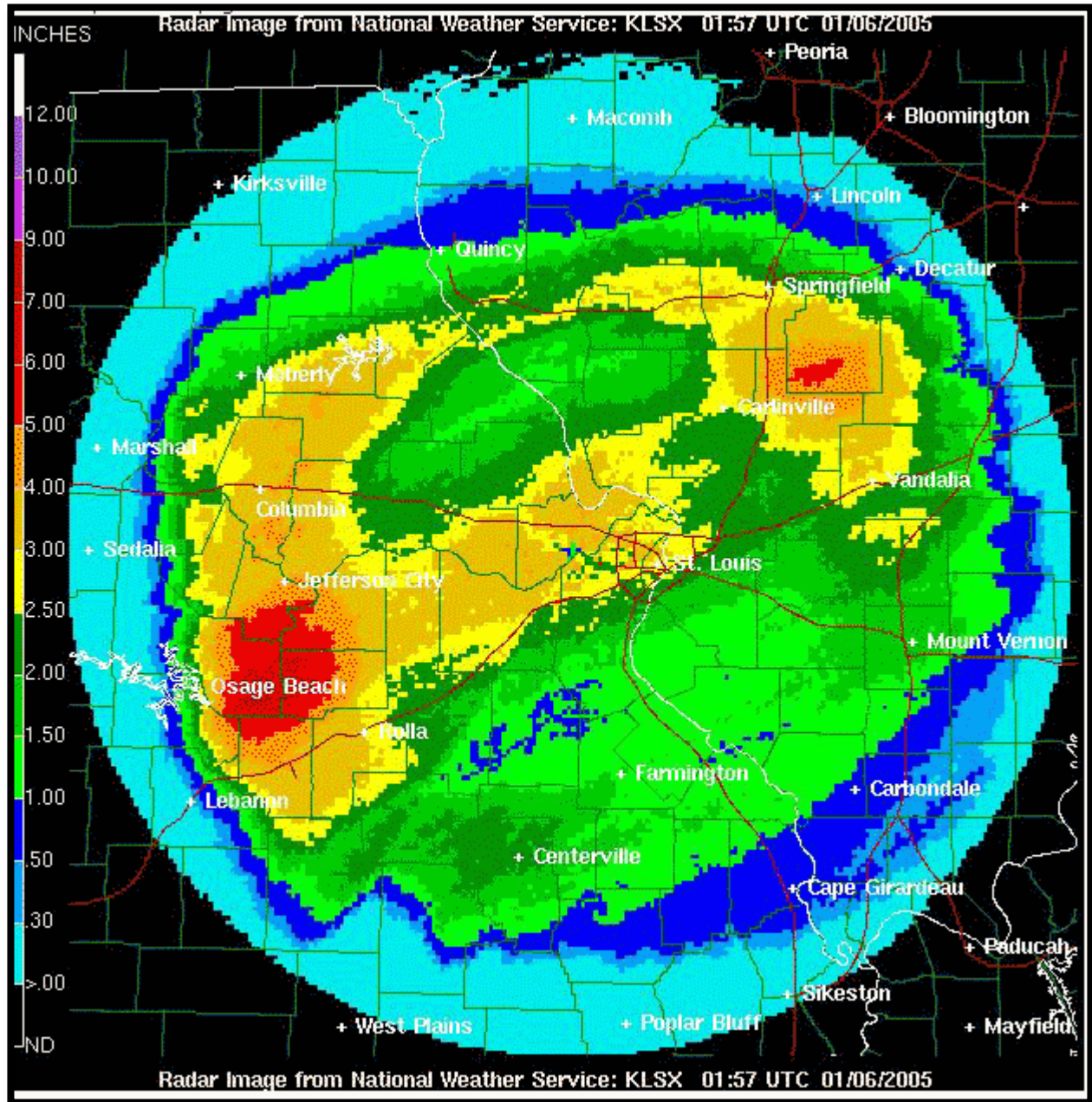
BTWI2	BROWNSTOWN 4SW	0.00	0.04	2.46	0.78	2.06	0.86	6.20
CAYI2	CARLYLE	0.01	0.02	1.50	0.38	1.71	0.97	4.59
PTKI2	PATOKA	0.08	0.24	1.30	0.41	1.92	1.02	4.97
RAMI2	RAMSEY	0.10	0.29	1.89	0.86	2.26	0.86	6.26
SLOI2	SALEM IL	0.01	0.09	1.04	0.40	2.50	1.26	5.30
VNDI2	VANDALIA	0.14	0.13	1.98	0.82	2.29	1.01	6.37

### SOUTHWEST ILLINOIS

ABRI2	ALBERS	0.38	0.15	1.00	0.29	1.75	1.15	4.72
CNTI2	CENTRALIA	0.40	0.15	0.95	0.43	1.80	1.52	5.25
EDWI2	EDWARDSVILLE 2W	0.35	0.14	2.01	0.29	3.05	0.80	6.64
GRVI2	GREENVILLE 2NE	0.42	0.15	1.23	0.58	2.34	0.85	5.57
HLBI2	HILLSBORO	0.22	0.17	0.94	0.67	2.35	0.87	5.22
JVLI2	JERSEYVILLE 2SW	0.06	0.11	1.21	0.54	2.19	1.09	5.20
KNLI2	KASKASKIA L/D	0.00	0.01	0.13	0.21	1.30	1.17	2.82
LBNI2	LEBANON IL	0.03	0.09	1.37	1.78	2.21	1.22	6.70
MTOI2	MOUNT OLIVE 1E	0.16	0.11	0.81	0.83	1.98	1.17	5.06
MEDI2	MEDORA	0.08	0.10	1.10	0.74	1.98	0.88	4.88
NSHI2	NASHVILLE 4NE	0.00	0.04	0.40	0.35	1.11	1.12	3.02
REDI2	RED BUD	0.00	0.16	0.46	0.40	1.14	0.99	3.15
SIEI2	SIU EDWARDSVILLE	0.35	0.32	2.02	0.40	3.00	0.80	6.89
STBI2	ST LIBORY	0.30	0.18	0.71	0.27	1.35	1.06	3.87
STEI2	STEELEVILLE	0.08	0.22	0.24	0.15	1.08	0.75	2.52
WTRI2	WATERLOO	0.00	0.13	0.76	0.16	1.83	0.89	3.77

# Radar Data

Radar Estimated Rainfall for the First Week of January 2005



*Any questions regarding this event review should be address to [w-lsx.webmaster@noaa.gov](mailto:w-lsx.webmaster@noaa.gov)*