

June 27, 2010 Tornadoes

Three confirmed tornadoes occurred over southeast Michigan on Sunday June 27th.

The first occurred near the community of Willow in southern Wayne County at 231 pm. This tornado was rated EF1 on the Enhanced Fujita Scale with estimated winds as high as 105 mph. The damage path started near Clark and Willow roads and continued northeastward for 1.4 miles before ending at Rust road just before I-275. Several homes suffered structural damage along the path, mostly to roofs and siding, but in a couple of cases more severe damage occurred to homes including the destruction of some garage structures.

The second tornado occurred at 706 pm in Clyde Township in St. Clair County. One fatality and 4 injuries resulted from this tornado as it hit a campground just north of I-69 and west of Wadhams. The tornado touched down north of Lapeer Rd along Rabidue Rd and continued eastward for 2.9 miles before lifting between Lapeer Rd and the Black River just east of Abbottsford Rd. This tornado was rated EF1 with maximum winds around 95 mph, which occurred at and just east of the Fort Trodd Campground.

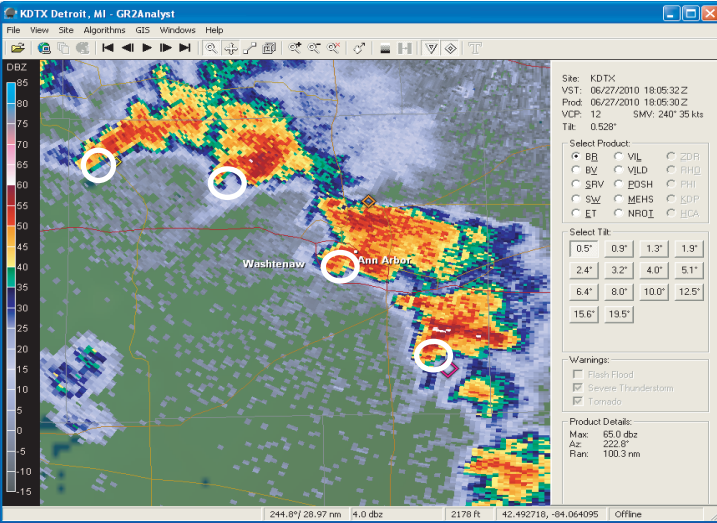
The third tornado occurred near Marlette in western Sanilac County. This weak tornado occurred at approximately 832 pm and produced winds to 75 mph and was rated EF0. The tornado touched down on the southeast side of Marlette on Euclid Avenue and continued for a half mile before dissipating. Four trees were snapped off and one shed was destroyed.



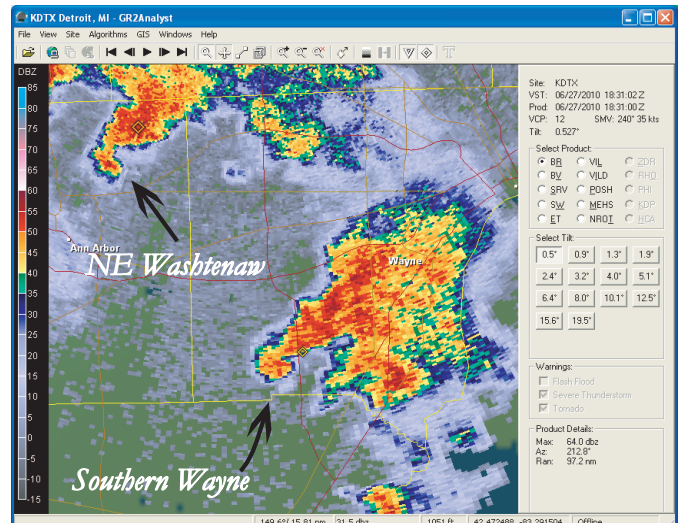
Image of Southern Wayne County Tornado



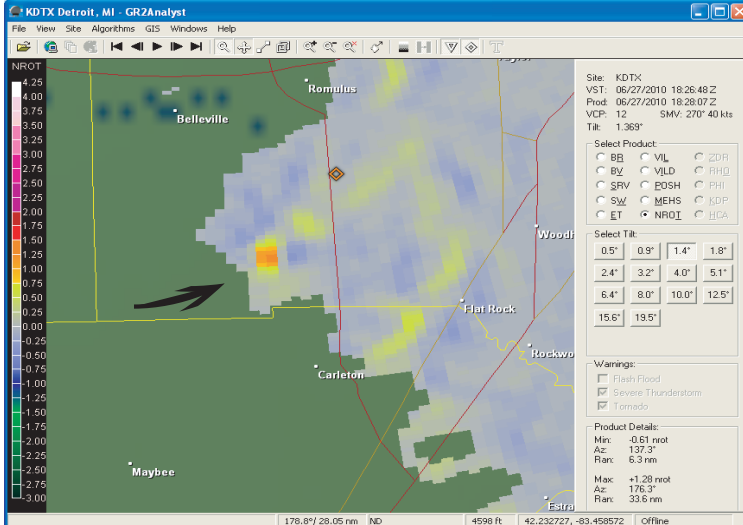
Damage near Willow along Waltz Rd north of Willow Rd



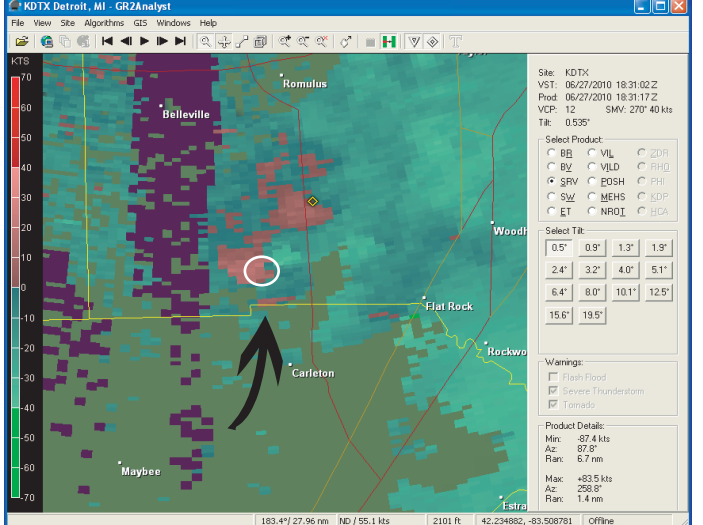
Four hook echoes with rotation simultaneously over Washtenaw County at 205 pm EDT



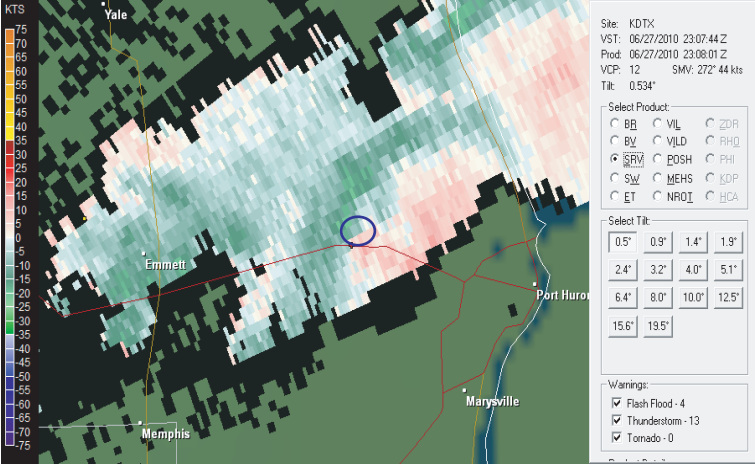
Hook Echo over southern Wayne County at 231 pm at time of tornado touchdown. Hook echo over northeast Washtenaw County did not produce a tornado.



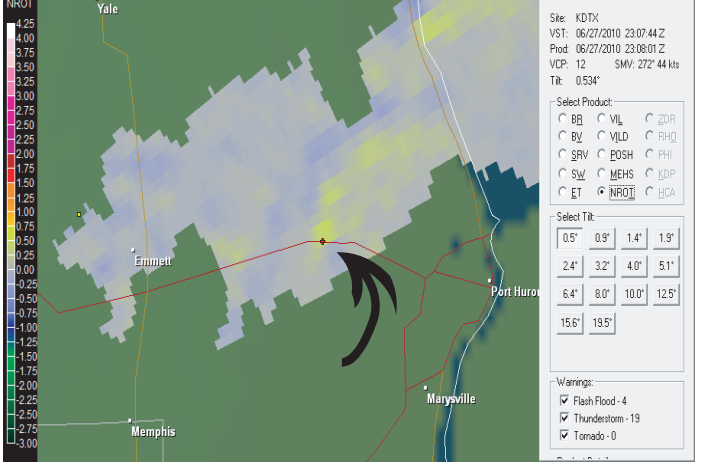
Normalized Rotation indicating strong circulation over southern Wayne County just prior to tornado touchdown near Willow.



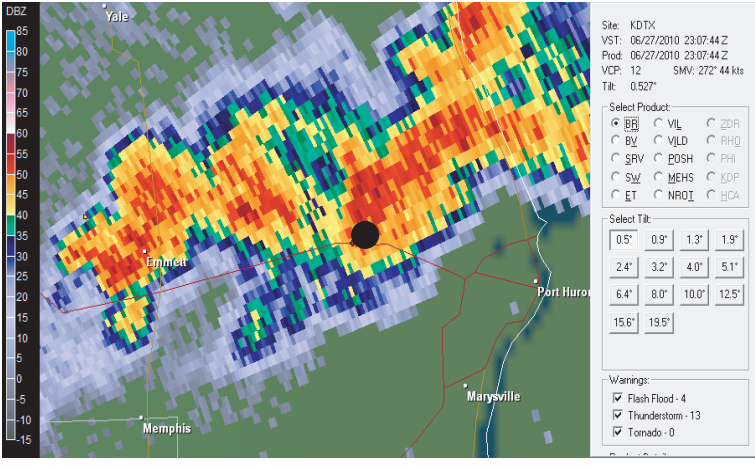
Doppler Radar Storm Relative Velocity showing strong circulation at time of tornado touchdown in southern Wayne County.



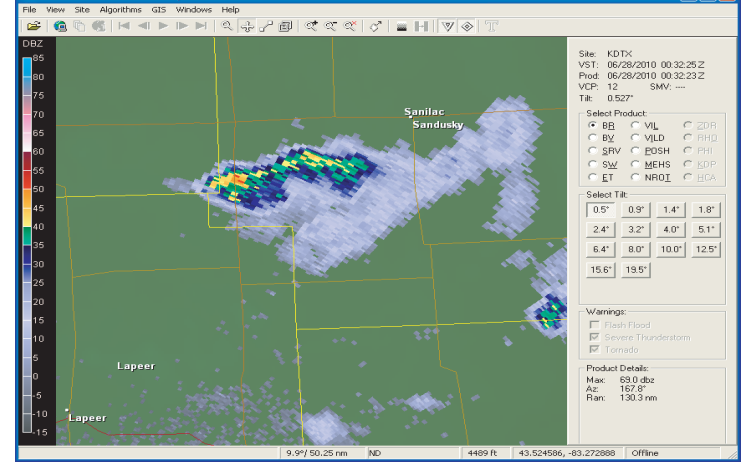
Doppler Radar Storm Relative Velocity showing weak circulation at 707 pm over Fort Trodd Campground



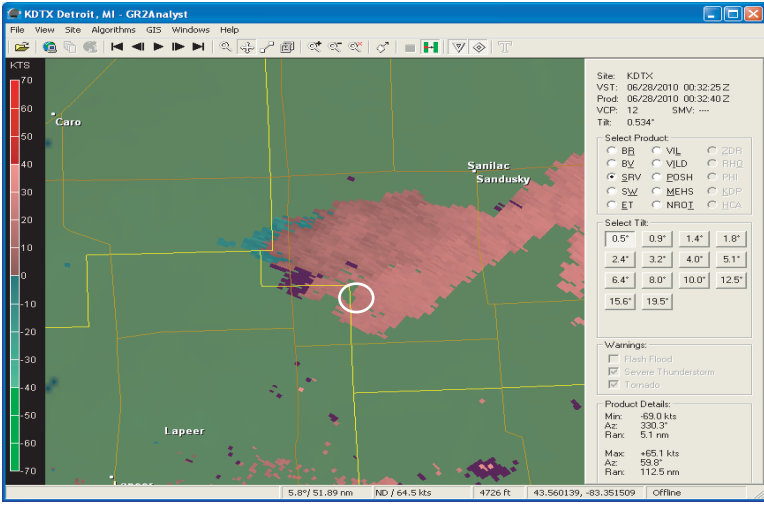
Normalized Rotation over Clyde Twp in St. Clair County at the time of tornado touchdown near Fort Trodd Campground



Radar Reflectivity depicting thunderstorms over Clyde Township at 707 pm. Black dot indicates campground location and location of touchdown.



Thunderstorm associated with Marlette tornado at 832 pm.



Doppler radar storm relative velocity associated with Marlette tornado. Very weak to nearly non-existent circulation noted.