

Southeast Michigan Climate Summary

Monthly Temperature, Precipitation, and Severe Weather Summaries

Weather Forecast Office
Detroit, MI



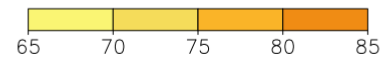
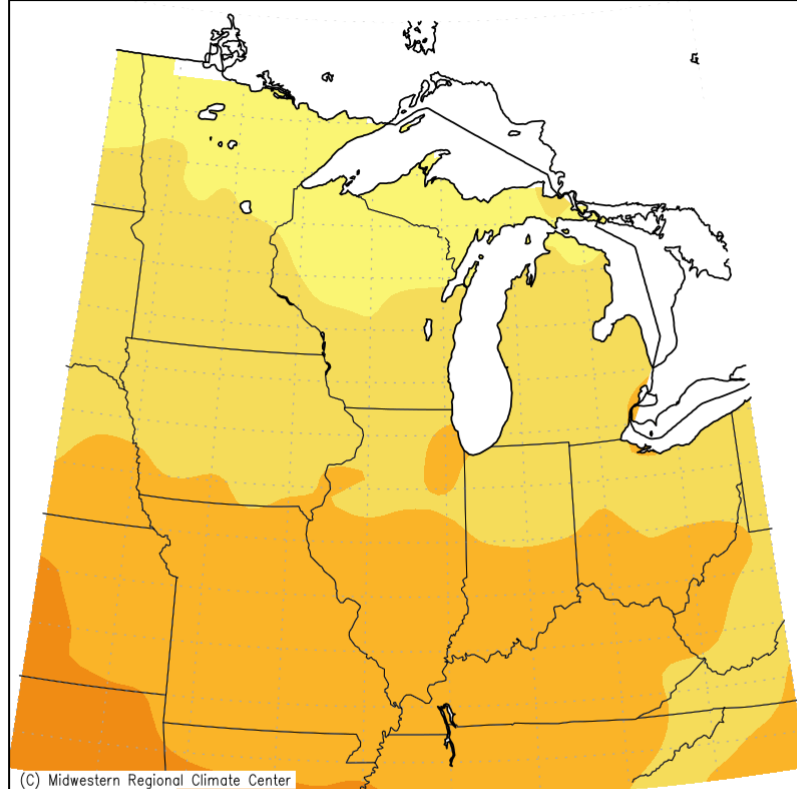
August 2021 – Regional Temperature Summary

Weather Forecast Office
Detroit, MI



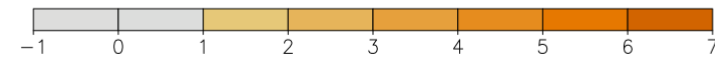
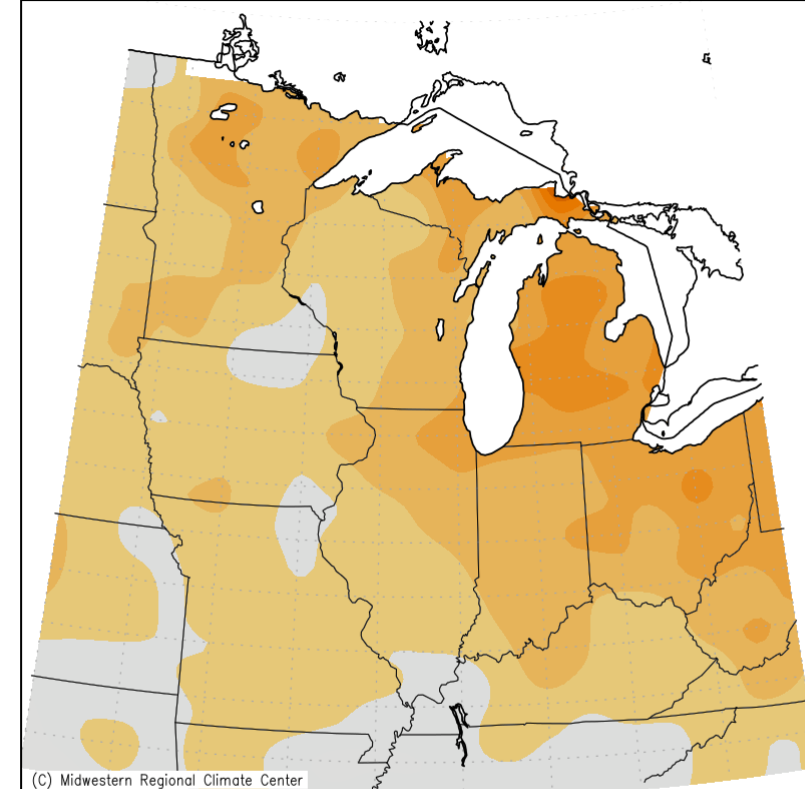
Average Temperature (left) & Departure from Average (right)

Average Temperature (°F)
August 1, 2021 to August 31, 2021



Midwestern Regional Climate Center
Purdue University

Average Temperature (°F): Departure from Mean
August 1, 2021 to August 31, 2021



Midwestern Regional Climate Center
Purdue University

August 2021 – SE Michigan Temperature Summary

Weather Forecast Office
Detroit, MI



Warmest, Coldest, and Averages (°F)

Location	Highest Temp	Lowest Temp	Avg High	Avg Low	Monthly Avg	Location	Highest Temp	Lowest Temp	Avg High	Avg Low	Monthly Avg
ADRIAN LENAWEE COUNTY AP	92	51	84.3	62.5	73.4	LAPEER 2W	91	51	84.4	62.4	73.4
ALGONAC WWTP	93	52	86.1	62.3	74.2	LAPEER WWTP	91	52	84.6	62.4	73.6
ANN ARBOR MUNICIPAL AP	91	46	84.1	60.0	72.0	LEXINGTON WATER PLANT	91	52	81.2	62.3	71.7
ANN ARBOR SE	91	51	84.7	62.0	73.4	LINDEN WWTP	88	51	82.2	62.3	72.3
ANN ARBOR U OF MICH	91	49	84.9	61.4	73.1	MANCHESTER	92	50	85.0	61.7	73.4
BAD AXE	91	53	82.5	61.7	72.1	MIDLAND	87	53	80.1	62.2	71.2
BURTON 4N	91	49	84.1	60.8	72.4	NEWPORT 4SSE	92	54	84.5	65.2	74.9
CARO WWTP	91	51	84.4	61.7	73.3	OIL CITY 2S	88	48	81.7	59.3	70.4
CASS CITY 1 SSW	90	50	81.9	60.1	71.0	OWOSSO WWTP	92	52	84.5	62.7	73.6
CHELSEA	91	51	84.4	62.0	73.2	PONTIAC INTL AP	90	55	83.5	65.0	74.2
DEARBORN NO. 2	93	57	85.2	66.9	76.1	PONTIAC WWTP	91	55	84.4	64.8	74.6
DETROIT CITY AP	92	58	85.8	68.7	77.2	PORT HOPE	90	56	79.5	65.6	72.5
DETROIT METRO AIRPORT	92	55	84.8	66.6	75.7	PORT HURON	91	56	83.9	68.3	76.1
DETROIT WILLOW RUN AP	93	52	87.3	65.0	76.2	RICHMOND 4 NNW	91	51	83.5	63.7	73.6
FARMINGTON	90	53	83.9	62.7	73.3	SAGINAW #3	91	55	85.2	64.4	74.8
FILION 5NNW	90	54	82.1	62.2	72.2	SAGINAW MBS INTL AP	90	53	83.6	64.0	73.8
FLINT FCWOS	90	51	84.4	62.7	73.5	SALINE 4SW	93	50	86.3	61.9	74.1
GOODRICH	89	51	82.7	63.2	73.0	TIPTON 2WNW	92	51	85.3	60.4	72.8
GROSSE POINTE FARMS	94	57	84.7	67.2	76.0	VASSAR	91	50	84.4	60.3	72.3
HARBOR BEACH 1 SSE	90	54	78.9	62.7	70.8	WHITE LAKE 4E	90	49	83.6	60.1	71.8

August – Top 20 Coldest/Warmest on Record



Top 20 Coldest/Warmest Augusts in Southeast Lower Michigan (°F)

Rank	Detroit Area*				Flint Bishop**				Saginaw Area***			
	Coldest		Warmest		Coldest		Warmest		Coldest		Warmest	
	Temp	Year	Temp	Year	Temp	Year	Temp	Year	Temp	Year	Temp	Year
1	65.9	1915	77.1	1995	64.7	1967	76.0	1947	64.0	1915	75.1	1937
2	66.6	1992	76.7	2016	65.0	1997	75.5	2016	64.6	1992	74.8	1947
3	66.6	1927	76.5	1947	65.2	1992	74.8	1938	65.0	1982	74.1	1959
4	66.8	1885	76.3	1959	65.2	1964	74.2	1995	65.0	1977	74.1	1955
5	66.8	1875	75.8	2018	65.3	1963	74.2	1936	65.0	1950	73.8	2021
6	67.0	1890	75.7	2021	65.5	1927	73.7	2010	65.3	1979	73.7	1995
7	67.0	1883	75.7	1955	65.6	2004	73.7	1955	65.4	1946	73.7	1969
8	67.3	1967	75.5	1900	65.9	1994	73.5	2021	65.5	1997	73.4	2016
9	67.3	1912	75.2	2010	66.0	1957	73.3	1983	65.6	2004	73.3	2010
10	67.4	1903	75.0	1988	66.3	1986	73.3	1959	65.6	1986	73.1	1936
11	67.7	1982	74.9	1938	66.3	1966	73.0	1939	65.7	1964	72.9	1938
12	67.8	1897	74.8	2005	66.4	1999	72.6	1937	65.8	1963	72.6	2018
13	67.9	1979	74.8	1918	66.4	1946	72.6	1988	66.0	1951	72.5	1932
14	68.0	1907	74.6	1916	66.5	1924	72.6	1935	66.0	1912	72.4	1931
15	68.0	1902	74.5	1906	66.6	1982	72.2	1944	66.3	1999	72.3	1998
16	68.1	1997	74.4	1993	66.6	1951	71.9	2018	66.3	1923	72.3	1918
17	68.1	1904	74.3	1944	66.8	1979	71.9	1931	66.4	1924	72.1	1930
18	68.3	1946	74.2	1953	66.8	1950	71.8	1984	66.5	1972	72.0	1973
19	68.5	2004	74.2	1881	66.9	2017	71.7	1933	66.5	1927	71.9	1988
20	68.5	1887	74.1	2001	67.2	1985	71.6	1926	66.8	1994	71.9	2020

* Detroit Area temperature records date back to January 1874.

** Flint Bishop temperature records date back to January 1921.

*** Saginaw Area temperature records date back to January 1912.

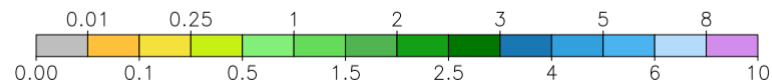
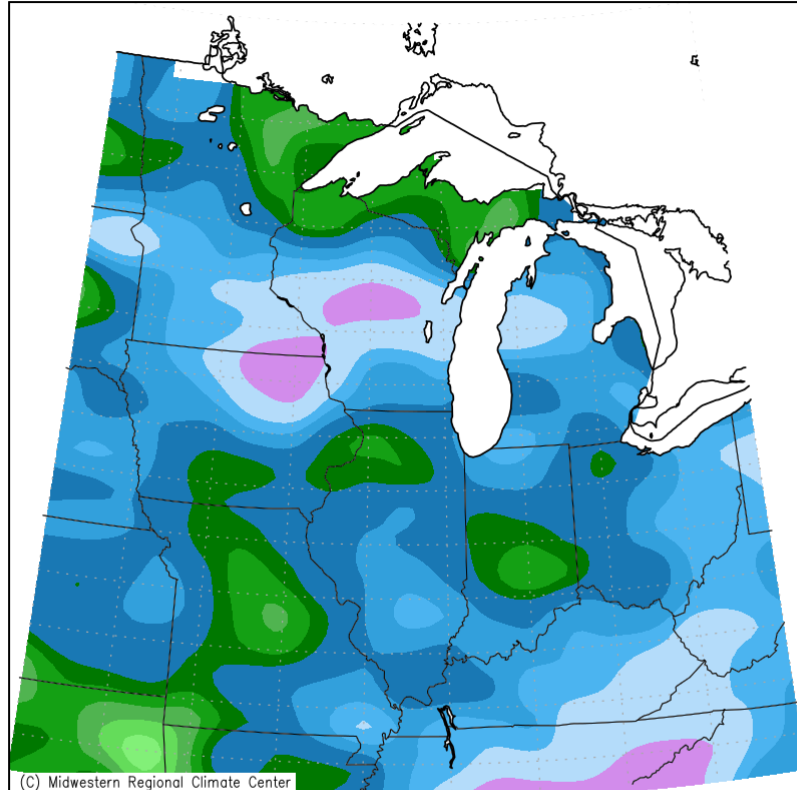
August 2021 – Regional Precipitation Summary

Weather Forecast Office
Detroit, MI



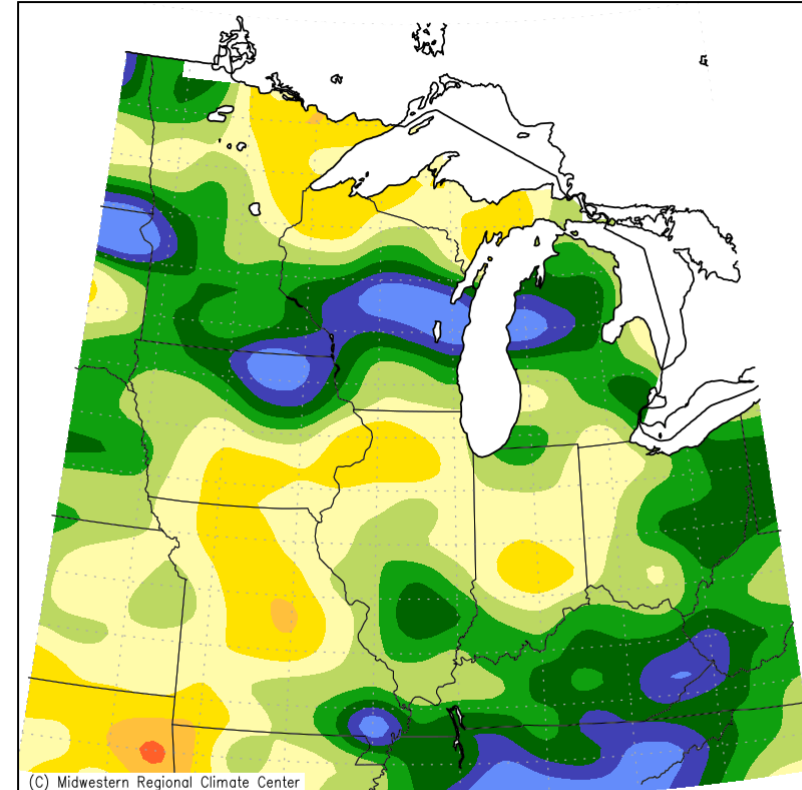
Total Monthly Precipitation (*left*) & Percent of Mean (*right*)

Accumulated Precipitation (in)
August 1, 2021 to August 31, 2021

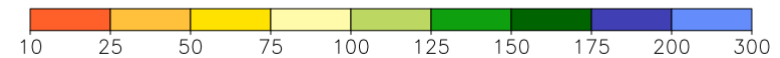


Midwestern Regional Climate Center
Purdue University

Accumulated Precipitation: Percent of Mean
August 1, 2021 to August 31, 2021



Mean period is 1991–2020.



Midwestern Regional Climate Center
Purdue University

August 2021 – SE Michigan Precipitation Summary

Weather Forecast Office
Detroit, MI

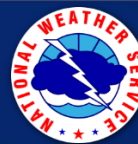


Highest daily total, monthly total, and total number of days of measureable precip (in.)

Location	Highest Daily Total	Monthly Total	# of Days with Precip	Location	Highest Daily Total	Monthly Total	# of Days with Precip	Location	Highest Daily Total	Monthly Total	# of Days with Precip
ADRIAN 2 NNE	0.72	1.68	8	DETROIT METRO AIRPORT	2.73	5.17	9	OTTAWA LAKE 1.4 SSW	0.97	3.69	10
ADRIAN LENAWEE CO AP	0.51	1.95	8	DEXTER 2.2 SE	2.24	3.64	13	OWOSSO WWTP	1.92	5.26	10
ALGONAC WWTP	1.45	4.92	9	FARMINGTON	2.62	6.17	9	PLYMOUTH 5.4 W	2.79	5.11	12
ANN ARBOR MUNI AP	2.53	4.74	12	FENTON 6.2 WSW	4.35	7.27	11	PONTIAC INTL AP	1.21	3.82	13
ANN ARBOR SE	3.53	4.78	11	FLINT FCWOS	1.32	5.15	10	PONTIAC WWTP	1.64	4.38	12
ANN ARBOR U OF MICH	3.69	5.43	11	GOODRICH	2.29	4.64	11	PORT HOPE	0.80	2.85	9
BAD AXE	0.45	1.84	10	GROSSE POINTE FARMS	1.70	5.73	14	PORT HURON	0.78	1.94	12
BAY CITY 2.4 W	0.98	4.42	11	HARBOR BEACH 1 SSE	1.02	3.37	8	RICHMOND 4 NNW	1.52	2.96	9
BELLEVILLE 2.8 ESE	2.41	4.89	11	HIGHLAND 1.3 NE	2.53	4.99	12	ROSEVILLE	2.26	6.18	12
BURTON 4N	1.51	4.74	12	HOWELL 4.9 ESE	5.14	6.72	12	ROSEVILLE 1.7 ENE	1.34	6.47	11
CARLETON 2.5 S	1.25	3.67	12	LAPEER 2W	1.22	3.33	10	SAGINAW 6.4 W	1.16	4.68	12
CARO WWTP	0.64	3.06	11	LAPEER WWTP	1.00	3.52	11	SAGINAW MBS INTL AP	0.79	3.91	11
CASS CITY 1 SSW	0.70	3.86	10	LINDEN WWTP	3.94	6.87	9	SALINE 4SW	1.97	3.04	13
CHELSEA	2.51	4.28	11	LIVONIA 2.0 NE	2.20	4.51	11	SHELBY 0.4 SSE	1.15	4.57	9
CHELSEA 2.4 S	2.57	4.12	10	MANCHESTER	2.45	3.58	9	WATERFORD 2.1 NW	1.69	4.42	15
CHELSEA 3.7 NNE	2.35	4.35	10	MIDLAND	2.07	4.70	9	WHITE LAKE 0.5 E	2.63	5.55	10
CLINTON 0.5 NE	2.18	3.46	12	MIDLAND 1.5 NNE	2.21	4.05	11	WHITE LAKE 4E	1.20	5.28	14
DEARBORN HGHTS 1.8 NW	2.74	7.34	12	MONROE 3.0 S	0.78	2.69	11	WHITMORE LAKE 1NW	3.56	6.22	10
DEARBORN NO. 2	3.22	6.48	9	NEW BALTIMORE 0.4 SSE	1.05	4.16	11	WYANDOTTE	2.92	5.93	9
DETROIT CITY AP	1.81	5.63	10	NEWPORT 4SSE	0.67	1.98	12				

August – Top 20 Wettest/Driest on Record

Weather Forecast Office
Detroit, MI



Top 20 Wettest/Driest Augusts in Southeast Lower Michigan (in.)

Rank	Detroit Area*				Flint Bishop**				Saginaw Area***			
	Wettest		Driest		Wettest		Driest		Wettest		Driest	
	Total	Year	Total	Year	Total	Year	Total	Year	Total	Year	Total	Year
1	8.33	1926	0.16	1894	11.18	1937	0.32	2010	9.43	2012	0.27	1927
2	7.83	1975	0.19	1889	11.04	1975	0.41	1927	9.04	1995	0.63	1969
3	7.51	1940	0.27	2008	8.68	1956	0.45	1969	9.01	1975	0.68	1957
4	7.29	1877	0.43	1996	7.69	2018	0.54	1930	8.02	2018	0.68	1930
5	7.07	1959	0.52	1929	6.93	1961	0.65	1929	7.15	1914	0.81	1954
6	6.87	1987	0.59	2010	5.86	1921	0.68	1996	6.73	2007	0.93	1982
7	6.61	2007	0.60	1902	5.56	1989	0.81	1976	6.72	1987	1.00	2003
8	6.53	1956	0.62	1907	5.47	2009	0.93	2005	6.25	1940	1.00	1929
9	6.32	2014	0.62	1899	5.35	1968	1.08	1931	5.95	1913	1.04	1935
10	6.09	1980	0.72	1982	5.29	1986	1.19	1957	5.88	2016	1.13	1933
11	6.04	1875	0.84	1931	5.28	1942	1.26	1948	5.66	1955	1.15	1984
12	5.99	2020	0.90	1930	5.26	1959	1.38	1962	5.51	1938	1.25	1916
13	5.98	2013	0.90	1883	5.15	2021	1.51	2002	5.50	2015	1.29	1996
14	5.87	1964	1.06	1969	5.09	2007	1.54	2001	5.46	1981	1.30	1971
15	5.62	2016	1.06	1927	5.03	1987	1.62	1971	5.34	1926	1.37	2005
16	5.51	1880	1.07	1936	4.94	1926	1.64	1938	5.28	1915	1.37	1980
17	5.27	1888	1.11	1910	4.90	2016	1.65	1936	5.19	1977	1.41	1948
18	5.17	2021	1.12	1943	4.83	1995	1.76	1973	5.18	1972	1.43	1934
19	5.12	1961	1.20	2018	4.57	1972	1.76	1928	5.05	1956	1.46	1970
20	5.05	1885	1.29	1918	4.55	1965	1.81	1923	4.94	1991	1.51	1998

* Detroit Area precipitation records date back to November 1874.

** Flint Bishop precipitation records date back to January 1921.

*** Saginaw Area precipitation records date back to January 1912.

August 2021 – Significant Weather Events

Weather Forecast Office
Detroit, MI



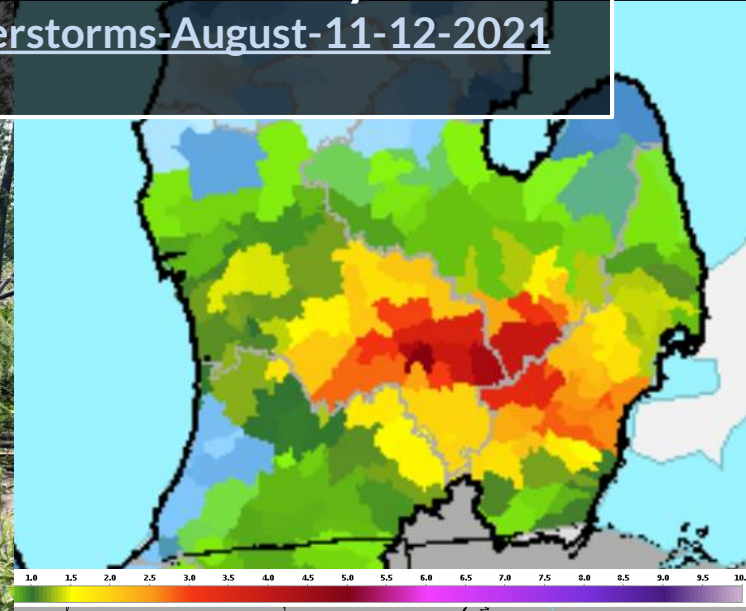
Follow links for web summaries

August 11-12 Severe Weather and Heavy Rainfall

weather.gov/dtx/SevereThunderstorms-August-11-12-2021

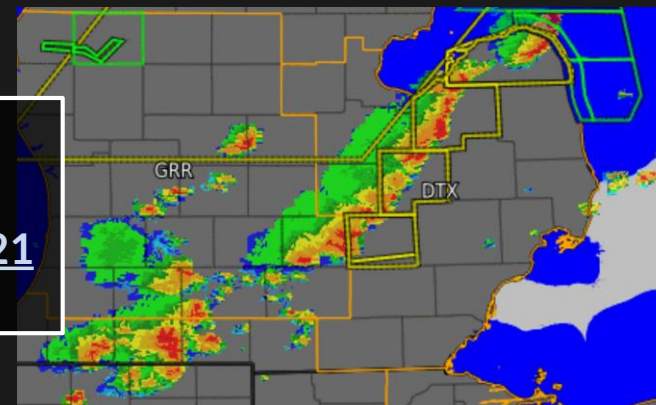


Flushing – Courtesy Mallory Pearson



August 29 Severe Weather

weather.gov/dtx/severeweather082921





NOWData | Observed Weather | Climate Prediction and Variability | Local Data/Records | Climate Resources

NOWData - NOAA Online Weather Data

1. Location » 2. Product » 3. Options » 4. View »

View map

- ✓ Detroit Area
- Flint Area
- Saginaw Area
- Adrian 2 Nne, MI
- Ann Arbor Univ O, MI
- Bad Axe, MI
- Caro Wwtp, MI
- Chelsea, MI
- Detroit City Ap, MI
- Detroit Metropol, MI

Product

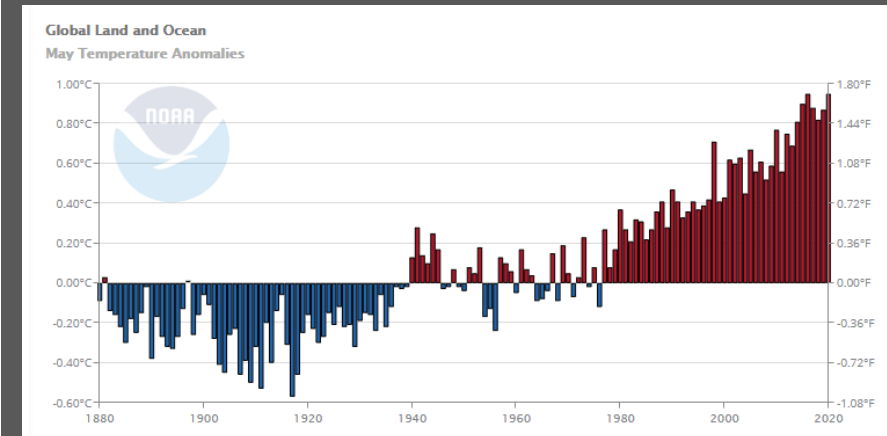
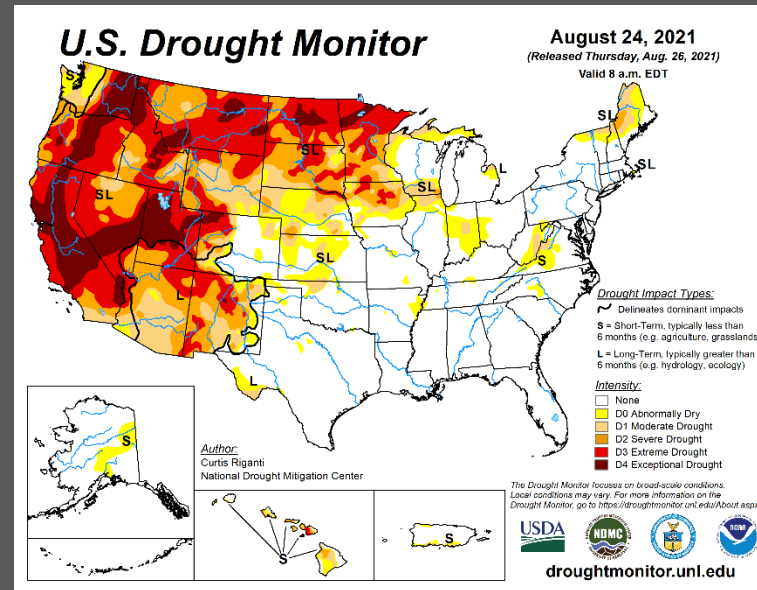
- ✓ Daily data for a month
- Daily almanac
- Monthly summarized data
- Calendar day summaries
- Daily/monthly normals
- Climatology for a day
- First/last dates
- Temperature graphs
- Accumulation graphs

Date: 2021-08 **Go**

Product Description:
DAILY DATA FOR A MONTH - daily maximum, minimum and average temperature (degrees F), average temperature departure from normal (degrees F), heating and cooling degree days (base 65), precipitation, snowfall and snow depth (inches) for all days of the selected month. Basic monthly summary statistics are also provided.

Powered by: **CACIS**
10/22 Regional Climate Centers

The Applied Climate Information System (ACIS) is a joint project of the Regional Climate Centers, the National Centers for Environmental Information (NCEI) and the National Weather Service. Official data and data for additional locations are available from the Regional Climate Centers and NCEI.



SE Michigan Climate Products

weather.gov/wrh/climate?wfo=dtx

U.S. Drought Monitor

drought.gov/drought/data-maps-tools/current-conditions

NOAA NCEI Climate at a Glance

ncdc.noaa.gov/cag/

Thank you to our COOP and CoCoRaHS volunteer weather observers!