



Southeast Michigan Climate Summary

Monthly Temperature, Precipitation, Snowfall, and Severe Weather Summaries

Michigan, Average Temperature, September
1901-2000
Avg. 58.5°F

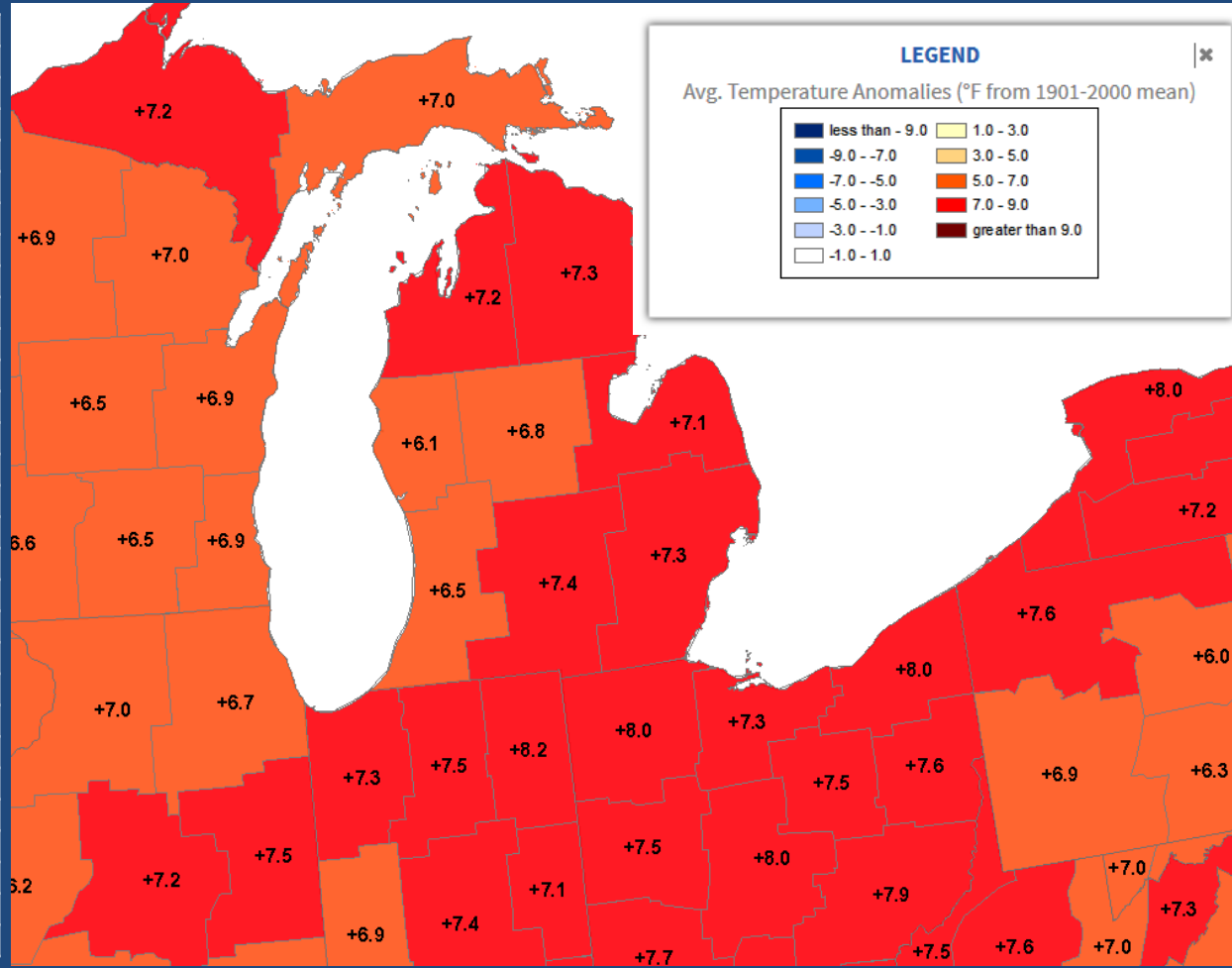




Southeast Michigan Climate Summary

Temperature Anomalies by NCEI Climate Division (page 1 of 2)

Location	Type	Average Temperature
ADRIAN	COOP	31.9
ADRIAN LENAWEE CO AP	WBAN	30.4
ALGONAC WWTP	COOP	30.6
ANN ARBOR MUNI AP	WBAN	29.6
ANN ARBOR SE	COOP	29.5
ANN ARBOR U OF MI	COOP	30.4
BAD AXE	COOP	26.9
BURTON 4N	COOP	28.2
CARO	COOP	26.9
CASS CITY 1 SSW	COOP	25.8
CHELSEA	COOP	28.7
CORUNNA 2 NE	COOP	27.8
DEARBORN	COOP	30.4
DEARBORN #2	COOP	30.8
DETROIT CITY AP	WBAN	31.1
DETROIT METRO AP	WBAN	32.1
DETROIT WILLOW RUN AP	WBAN	31.8
DUNDEE	COOP	30.5
DURAND WWTP	COOP	27.9
FARMINGTON	COOP	28.3
FLINT 7 W	COOP	27.9
FLINT BISHOP INTL AP	WBAN	28.9
GOODRICH	COOP	28.2
LAPEER 2 W	COOP	28.4
LAPEER WWTP	COOP	27.7
LEXINGTON WTP	COOP	28
LINDEN WWTP	COOP	27
MANCHESTER	COOP	29.1
MIDLAND	COOP	27.7

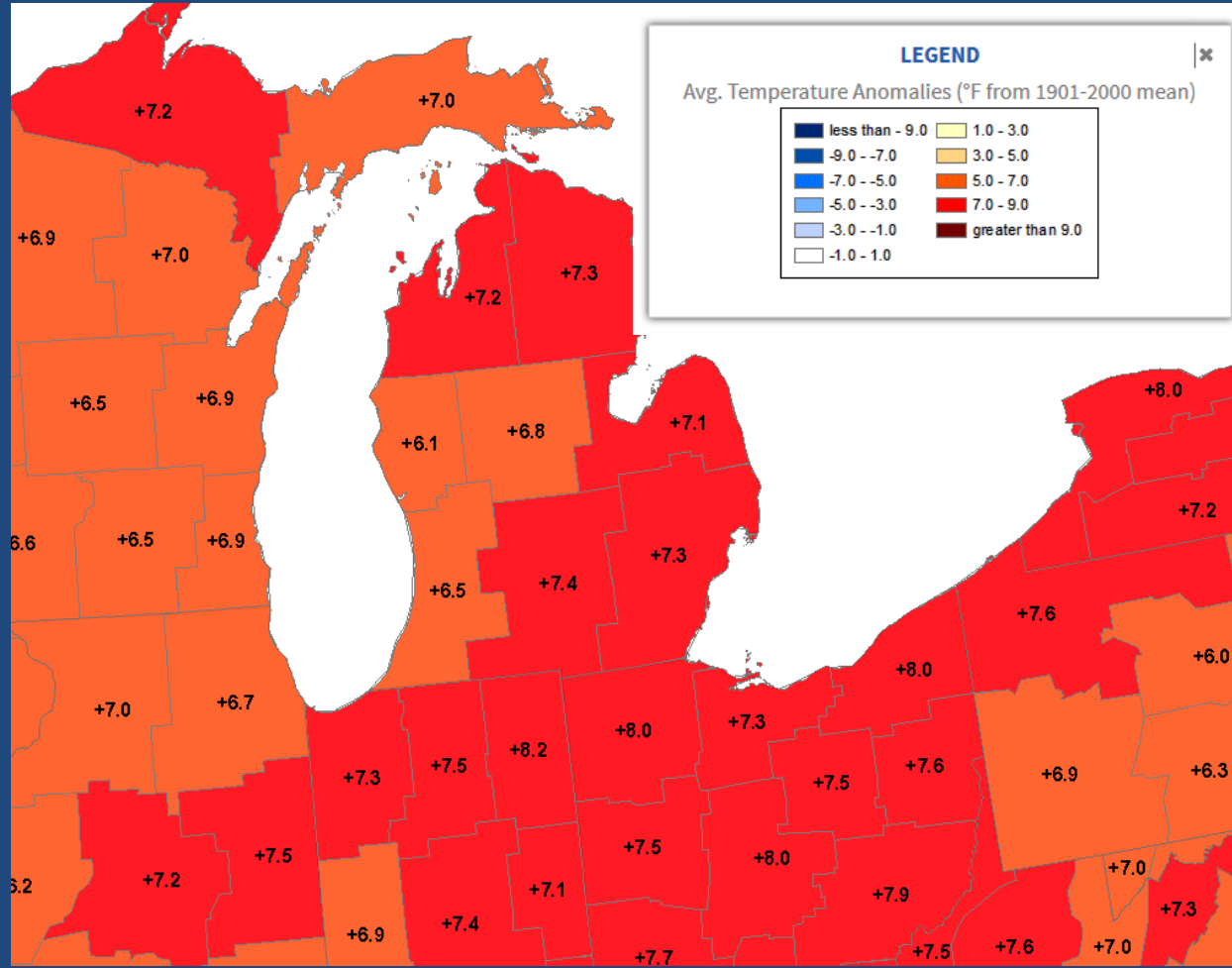




Southeast Michigan Climate Summary

Temperature Anomalies by NCEI Climate Division (page 2 of 2)

Location	Type	Average Temperature
MORENCI	COOP	30.5
MT CLEMENS 2 WNW	COOP	30.5
NEWPORT 4SSE	COOP	29.5
OIL CITY 2S	COOP	24.2
OWOSSO WWTP	COOP	28.1
PONTIAC OAKLAND CO INTL AP	WBAN	28.9
PORT HOPE	WBAN	28.1
RICHMOND 4 NNW	COOP	29
SAGINAW #3	COOP	27.4
SAGINAW MBS INTL AP	WBAN	27.9
TECUMSEH	COOP	29.5
TIPTON 2 WNW	COOP	29.4
VASSAR	COOP	26.8
WHITMORE LAKE 1NW	COOP	28.1

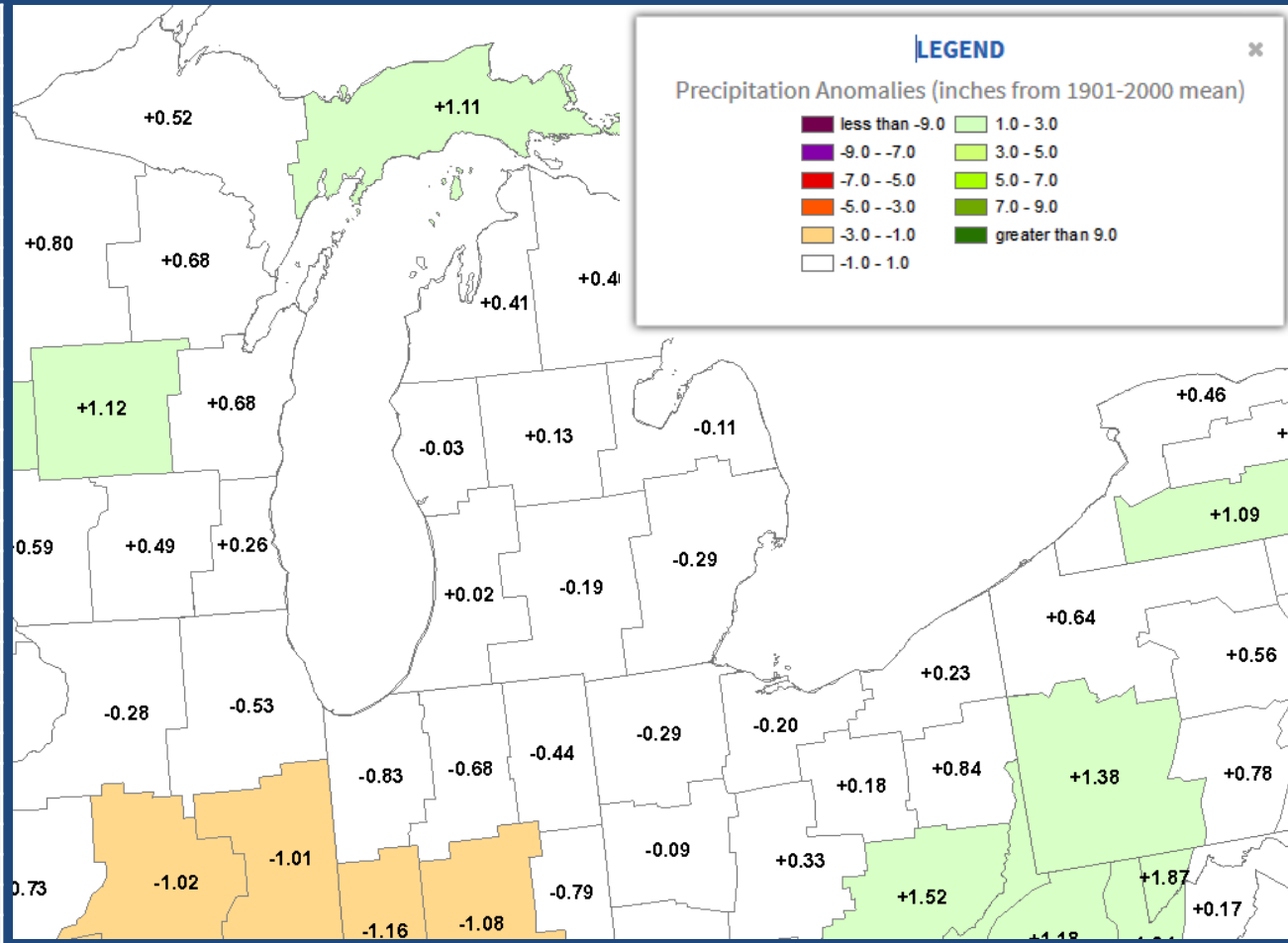




Southeast Michigan Climate Summary

Precipitation Anomalies by NCEI Climate Division (page 1 of 3)

Location	Type	Precipitation
ADRIAN	COOP	2.93
ADRIAN LENAWEE CO AP	WBAN	2.71
ALGONAC WWTP	COOP	1.79
ANN ARBOR 3.1 SE	CoCoRaHS	3.14
ANN ARBOR MUNI AP	WBAN	2.45
ANN ARBOR SE	COOP	3.57
ANN ARBOR U OF MI	COOP	4.00
BAD AXE	COOP	3.74
BAY CITY 2.2 WNW	CoCoRaHS	2.94
BLOOMFIELD TOWNSHIP 3.1 SW	CoCoRaHS	3.12
BURTON 4N	COOP	3.54
CARO	COOP	3.54
CASS CITY 1 SSW	COOP	2.81
CHELSEA	COOP	3.46
CHESANING	COOP	3.67
CORUNNA 2 NE	COOP	3.09
DEARBORN	COOP	3.33
DEARBORN #2	COOP	2.67
DEARBORN HEIGHTS 1.8 NW	CoCoRaHS	2.82
DETROIT CITY AP	WBAN	1.77
DETROIT METRO AP	WBAN	2.83
DETROIT WILLOW RUN AP	WBAN	2.62
DEXTER 0.3 ENE	CoCoRaHS	3.33
DEXTER 0.9 NW	CoCoRaHS	3.45
DEXTER 2.2 SE	CoCoRaHS	3.54
DUNDEE	COOP	2.63
DURAND 6.2 WNW	CoCoRaHS	3.33
DURAND WWTP	COOP	3.26
FARMINGTON	COOP	3.69
FARMINGTON HILLS 3.5 NW	CoCoRaHS	3.56

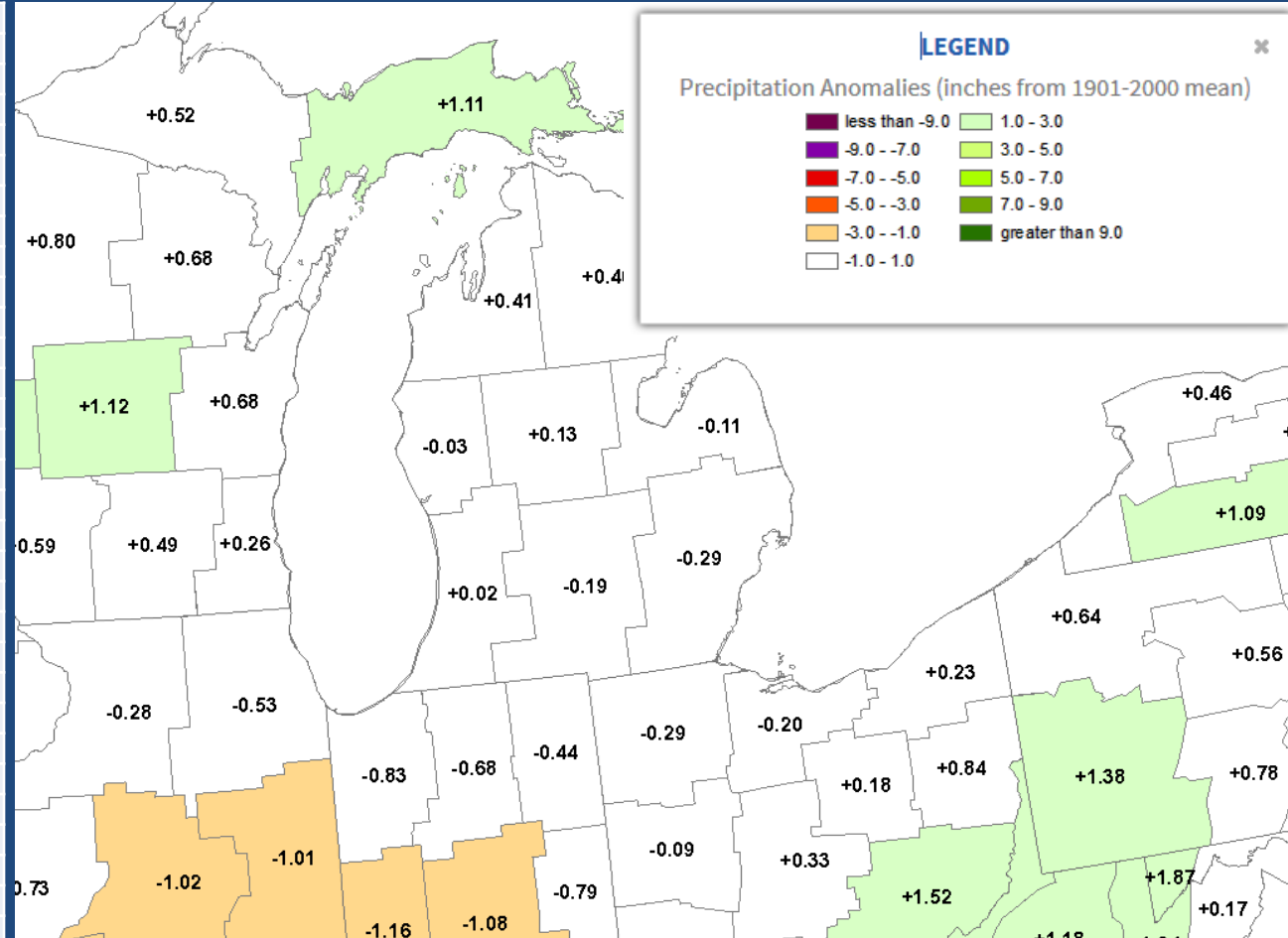




Southeast Michigan Climate Summary

Precipitation Anomalies by NCEI Climate Division (page 2 of 3)

Location	Type	Precipitation
FLINT 7 W	COOP	3.25
FLINT BISHOP INTL AP	WBAN	3.13
FRASER 1.2 N	CoCoRaHS	2.77
GOODRICH	COOP	3.05
GROSSE POINTE FARMS	COOP	2.28
HARBOR BEACH 1 SSE	COOP	3.10
LAMBERTVILLE 2.9 WNW	CoCoRaHS	3.88
LAPEER 2 W	COOP	3.82
LAPEER WWTP	COOP	3.05
LEXINGTON WTP	COOP	3.14
LINDEN WWTP	COOP	3.37
LIVONIA 2.3 NNW	CoCoRaHS	3.54
MANCHESTER	COOP	2.90
MIDLAND	COOP	2.65
MIDLAND 1.8 ENE	CoCoRaHS	2.75
MIDLAND 2.9 SW	CoCoRaHS	3.04
MILLINGTON 3 SE	COOP	3.04
MORENCI	COOP	3.41
MT CLEMENS 2 WNW	COOP	2.76
NEW BALTIMORE 0.4 SSE	CoCoRaHS	2.64
NEWPORT 4SSE	COOP	3.13
NORTHVILLE 3.2 ENE	CoCoRaHS	3.62
PONTIAC OAKLAND CO INTL AP	WBAN	3.02
PORT HOPE	WBAN	3.04
PORT HURON	COOP	3.83
PORT HURON 1.6 W	CoCoRaHS	3.43
RICHMOND 4 NNW	COOP	4.07
ROSEVILLE 1.7 ENE	CoCoRaHS	2.54
SAGINAW 5W	COOP	2.47
SAGINAW #3	COOP	3.60

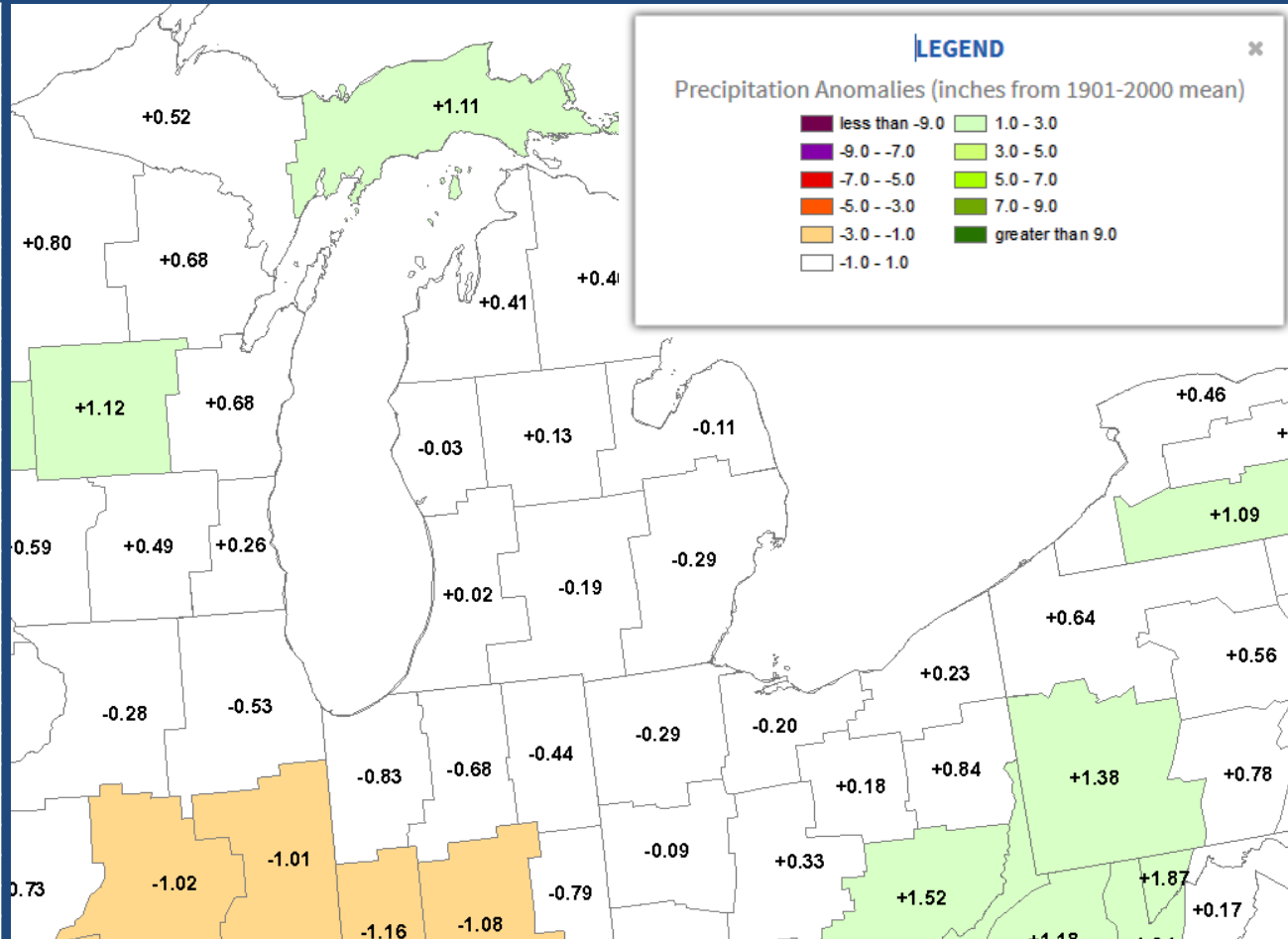




Southeast Michigan Climate Summary

Precipitation Anomalies by NCEI Climate Division (page 3 of 2)

Location	Type	Precipitation
SAGINAW MBS INTL AP	WBAN	2.54
SALINE 3.8 SSW	CoCoRaHS	2.54
TROY 1.8 S	CoCoRaHS	3.68
UTICA 2.9 E	CoCoRaHS	3.12
W BLOOMFIELD	COOP	3.72
WATERFORD 2.1 NW	CoCoRaHS	3.02
WHITE LAKE 0.5 E	CoCoRaHS	3.63
WYANDOTTE	COOP	3.04

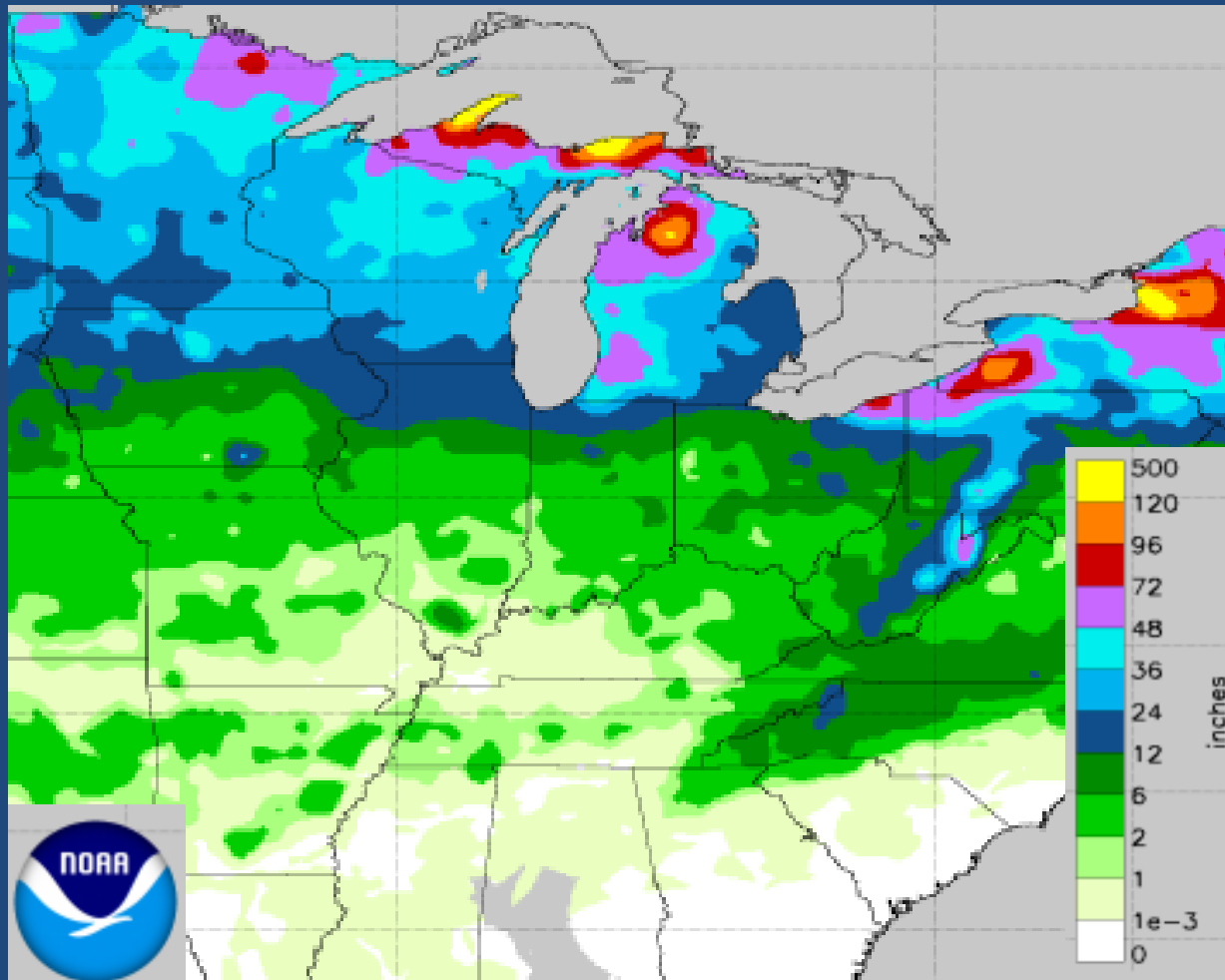




Southeast Michigan Climate Summary

NOHRSC Season Snow Accumulation as of January 31, 2017 (page 1 of 2)

Location	Type	Snowfall
ADRIAN	COOP	2.7
ANN ARBOR 2.1 WNW	CoCoRaHS	9.6
ANN ARBOR 3.1 SE	CoCoRaHS	8.0
ANN ARBOR SE	COOP	12.2
ANN ARBOR U OF MI	COOP	14.9
BAD AXE	COOP	6.3
BURTON 4N	COOP	7.3
CARLETON 2W	COOP	3.9
CARO	COOP	4.6
CASS CITY 1 SSW	COOP	3.4
CHELSEA	COOP	8.8
CHESANING	COOP	6.1
CORUNNA 2 NE	COOP	7.6
DETROIT METRO AP	WBAN	11.8
DUNDEE	COOP	5.5
DURAND 6.2 WNW	CoCoRaHS	6.5
DURAND WWTP	COOP	6.4
FARMINGTON	COOP	6.8
FILION 5 NNW	COOP	4.0
FLINT 7 W	COOP	9.7
FLINT BISHOP INTL AP	WBAN	10.4
GOODRICH	COOP	8.7
GROSSE POINTE FARMS	COOP	7.5
HARBOR BEACH 1 SSE	COOP	5.2
LAPEER 2 W	COOP	10.3
LAPEER WWTP	COOP	6.1
LEXINGTON WTP	COOP	1.4
LIVONIA 2.3 NNW	CoCoRaHS	7.8
MANCHESTER	COOP	8.5
MIDLAND 1.8 ENE	CoCoRaHS	8.4



[Click image to view source](#)

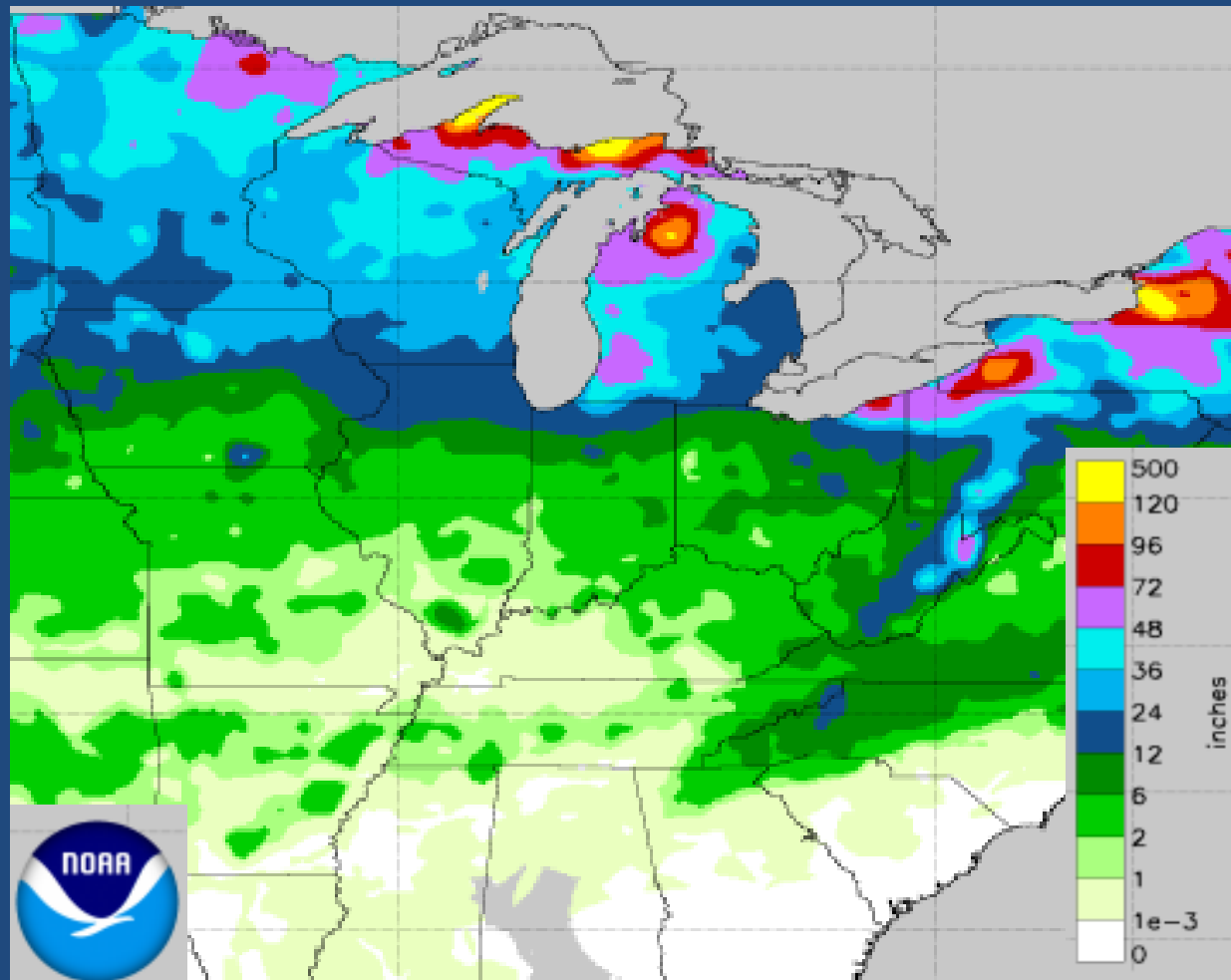




Southeast Michigan Climate Summary

NOHRSC Season Snow Accumulation as of January 31, 2017 (page 2 of 2)

Location	Type	Snowfall
MILFORD GM PROVING GROUND	COOP	5.4
MILLINGTON 3 SE	COOP	9.7
MORENCI	COOP	3.5
MT CLEMENS 2 WNW	COOP	6.8
NEW BALTIMORE 0.4 SSE	CoCoRaHS	7.8
NEWPORT 4SSE	COOP	7.9
NORTHVILLE 3.2 ENE	CoCoRaHS	4.8
OIL CITY 2S	COOP	10.0
PLYMOUTH 5.4 W	CoCoRaHS	5.7
PORT HURON	COOP	5.0
PORT HURON 1.6 W	CoCoRaHS	4.6
RICHMOND 4 NNW	COOP	6.9
SAGINAW 3.0 NW	CoCoRaHS	8.2
SAGINAW 5W	COOP	9.8
SAGINAW MBS INTL AP	WBAN	9.8
SALINE 3.8 SSW	CoCoRaHS	14.1
WYANDOTTE	COOP	13.1

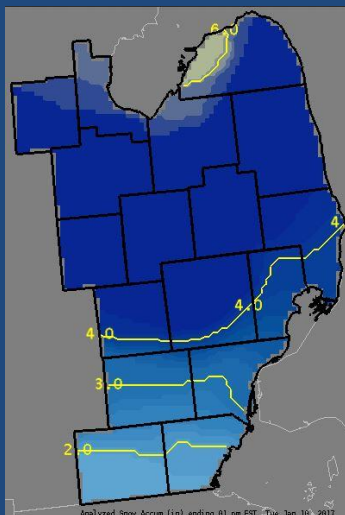


[Click image to view source](#)

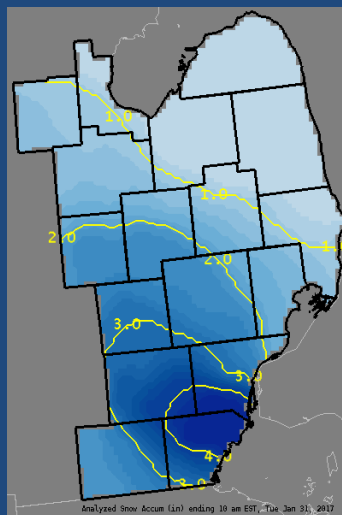


Southeast Michigan Climate Summary

Significant Weather – click image for web story



Snow, Jan 10



Snow, Jan 30-31



Southeast Michigan Climate Summary

Additional Climate Information

Observed Weather | Climate Locations | Climate Prediction

Observed

1. Product »

- Daily Climate Report (CLI)
- Preliminary Monthly Climate Data (CF6)
- Record Event Report (RER)
- Monthly Weather Summary (CLM)
- Regional Summary (RTP)
- State Summary (Temp/Precip)

2. Location »

- Detroit
- Flint
- Saginaw

Southeast Michigan Climate

<http://w2.weather.gov/climate/index.php?wfo=dtx>

NOAA NATIONAL CENTERS FOR ENVIRONMENTAL INFORMATION

Home | Climate Information | Data Access | Customer Support | Contact | About

Climate at a Glance

Climate Monitoring | State of the Climate | Temp, Precip, and Drought | Databases | Social Impacts | Snow and Ice | Teleconnections | GHCN Monthly | Monitoring References

Time Series | Mapping | Data Information | Background

U.S. | Globe

Choose from the options below and click "Plot" to create a time series graph.

Parameters: Average Temperature | Options

Time Scale: 1-Month | # Display Base Period

Month: September | Start: 1991 | End: 2009

Start Year: 1895 | # per Decade: 0 per Century

End Year: 2016 | Start: 1991 | End: 2016

State/Region: Michigan | # Smoothed Time Series

Climate Division/City: Statewide | # Seasonal Filter: LOCKS

Plot

NCEI Climate at a Glance

<http://www.ncdc.noaa.gov/cag/>

NOAA NATIONAL CENTERS FOR ENVIRONMENTAL INFORMATION

Home | Contact Us | About NCEI | Help

CEI > Storm Events Database (Select State)

Storm Events Database

Data available from 01/1950 to 06/2016

Data Access

- Search
- Bulk Data Download (CSV)
- Storm Data Publication

Documentation

- Database Details
- Version History
- Storm Data FAQ
- NOAA's NWS Documentation
- Tornado EF Scale

External Resources

- NOAA's SPC Reports
- NOAA's SPC WCM Page
- NOAA's NWS Damage Assessment Toolkit
- ESRUFEMA Civil Air Patrol Images
- SHELDUS
- USDA Cause of Loss Data

State/Area: Michigan

Begin Date: 06 / 01 / 2015

End Date: 06 / 30 / 2016

County:

- Alcona
- Alger
- Allegan
- Alpena
- Antrim
- Arenac
- Baraga
- Berry
- Bay

Storm Event Database

<http://www.ncdc.noaa.gov/stormevents/>



NWS Detroit/Pontiac, MI

<http://www.weather.gov/dtx>